

LATERAL STABILITY ON CASTERS:
 $13.79 / 27.35 = .50G$

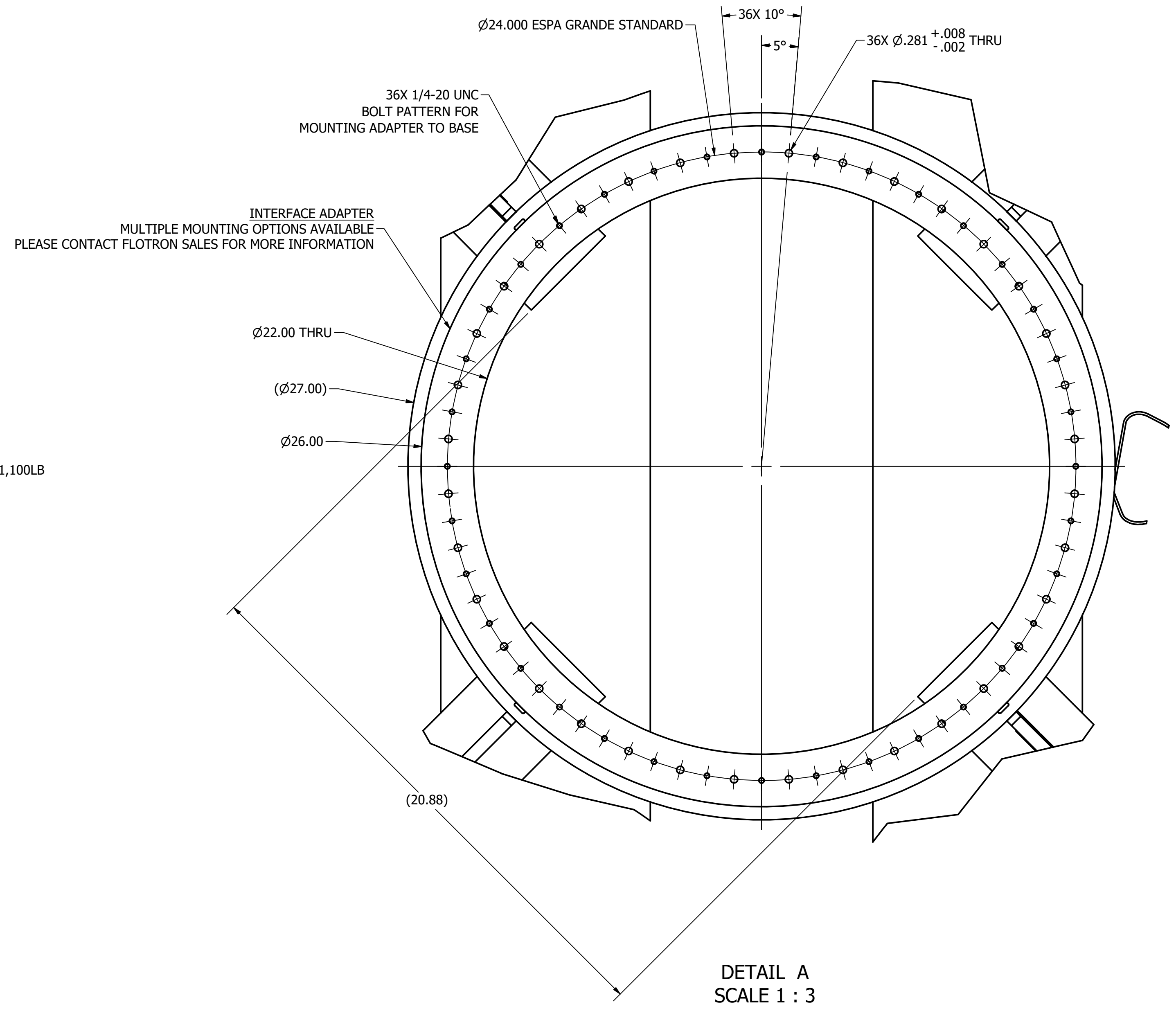
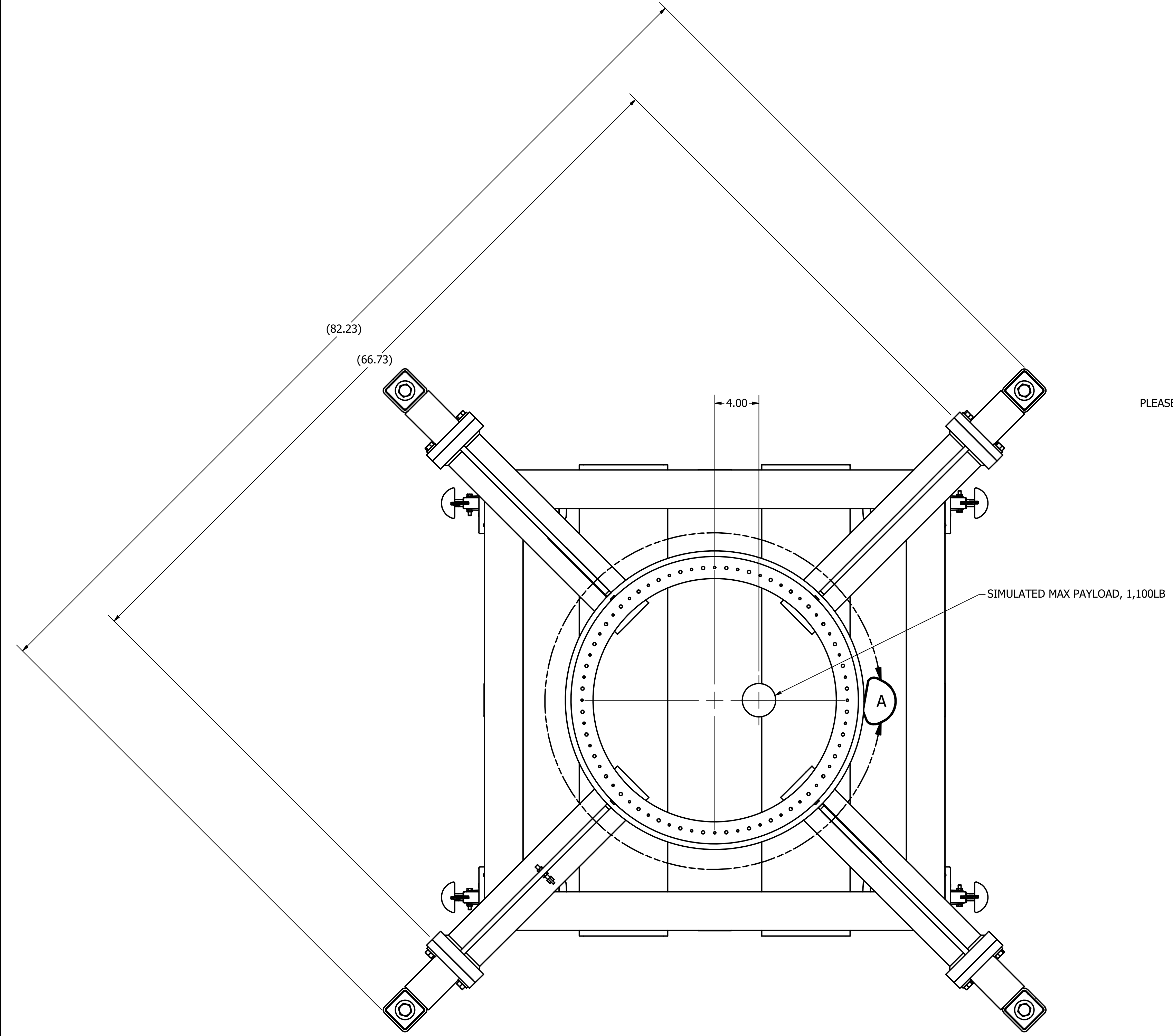
LATERAL STABILITY ON LEVELING JACKS:
 $26.91 / (27.16 + 5.50) = .82G$

CUSTOMER APPROVAL REQUIRED
 THIS PRINT MUST BE SIGNED AND DATED THEN RETURNED
 TO FLOTTRON
 SIGNATURE _____
 PRINT NAME _____
 DATE _____
 COMPANY _____

6. PAYLOAD ENVELOPE UNLIMITED ABOVE INTERFACE PLATE.
5. LOAD CAPACITY AND CG POSITION MAY BE MODIFIED, CONTACT FLOTTRON SALES FOR MORE INFORMATION.
4. BASE CONFIGURATION: SMP-E-SMS-J5.
3. FINISHES: CLEAN ROOM COMPATIBLE FINISHES "C" FINISH- SKY WHITE POWDER COATED BASE FRAME, NICKEL PLATED COMPONENTS (NO ZINC), STAINLESS STEEL FASTENERS AND MISC. HARDWARE. OPEN-ENDED TUBES NICKEL PLATED. KRYTOX GPL 207 LUBRICANT ON CASTERS, SYNCO - SUPER LUBE SYNTHETIC GREASE WITH PTFE LUBRICANT CONTAINED IN JACK HOUSING.
2. LOAD RATING: 1,100 LBS @ 4.0" MAX ECCENTRICITY AT 20.0" ABOVE THE INTERFACE CONSIDERING A SIMULTANEOUS 1/2G SIDE LOAD (WORST CASE DIRECTION) AND A 1G VERTICAL LOAD. SFy=3 & SFult=5.
1. WEIGHT IN TITLE BLOCK INCLUDES 1,100LB PAYLOAD.

NOTES:

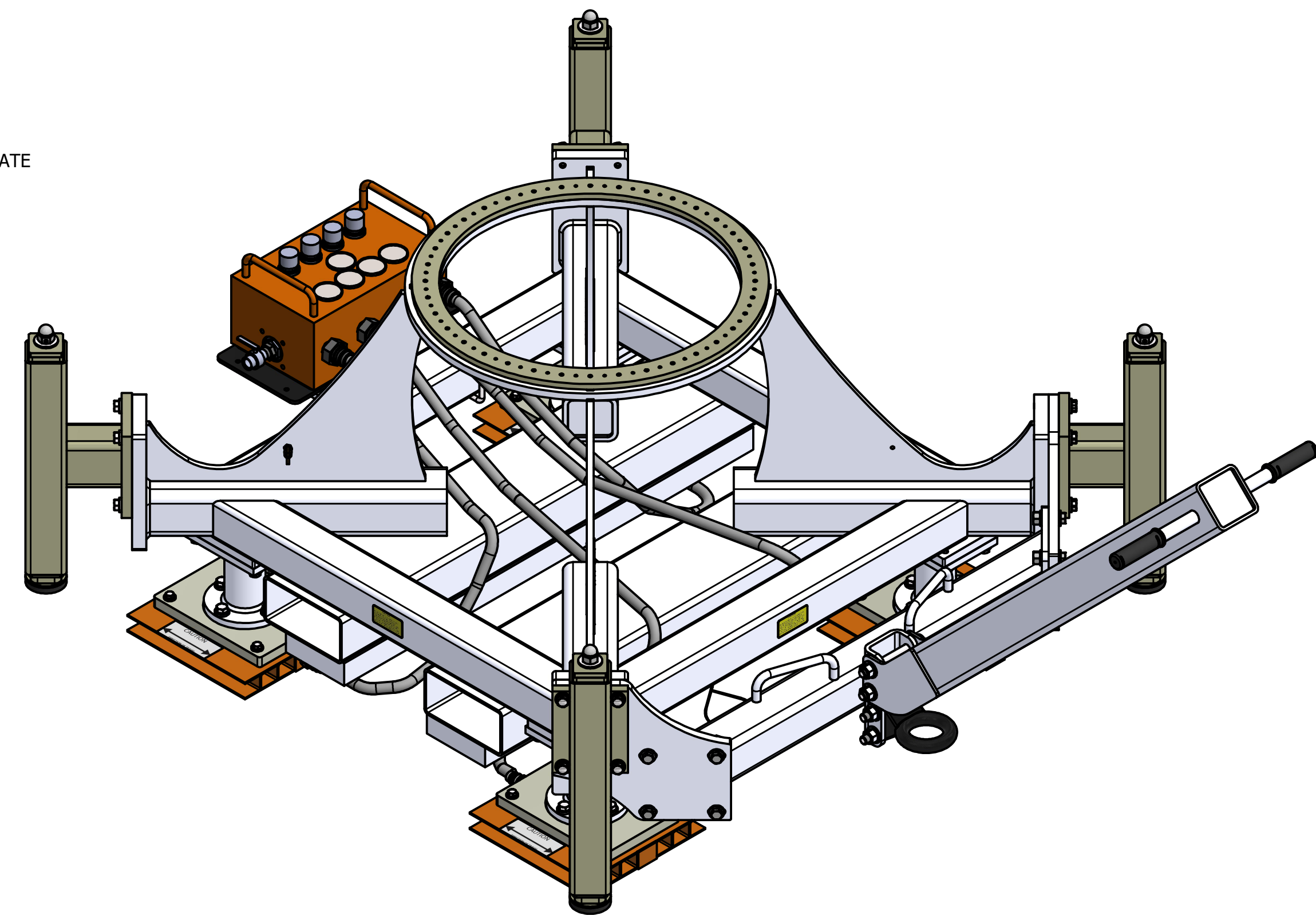
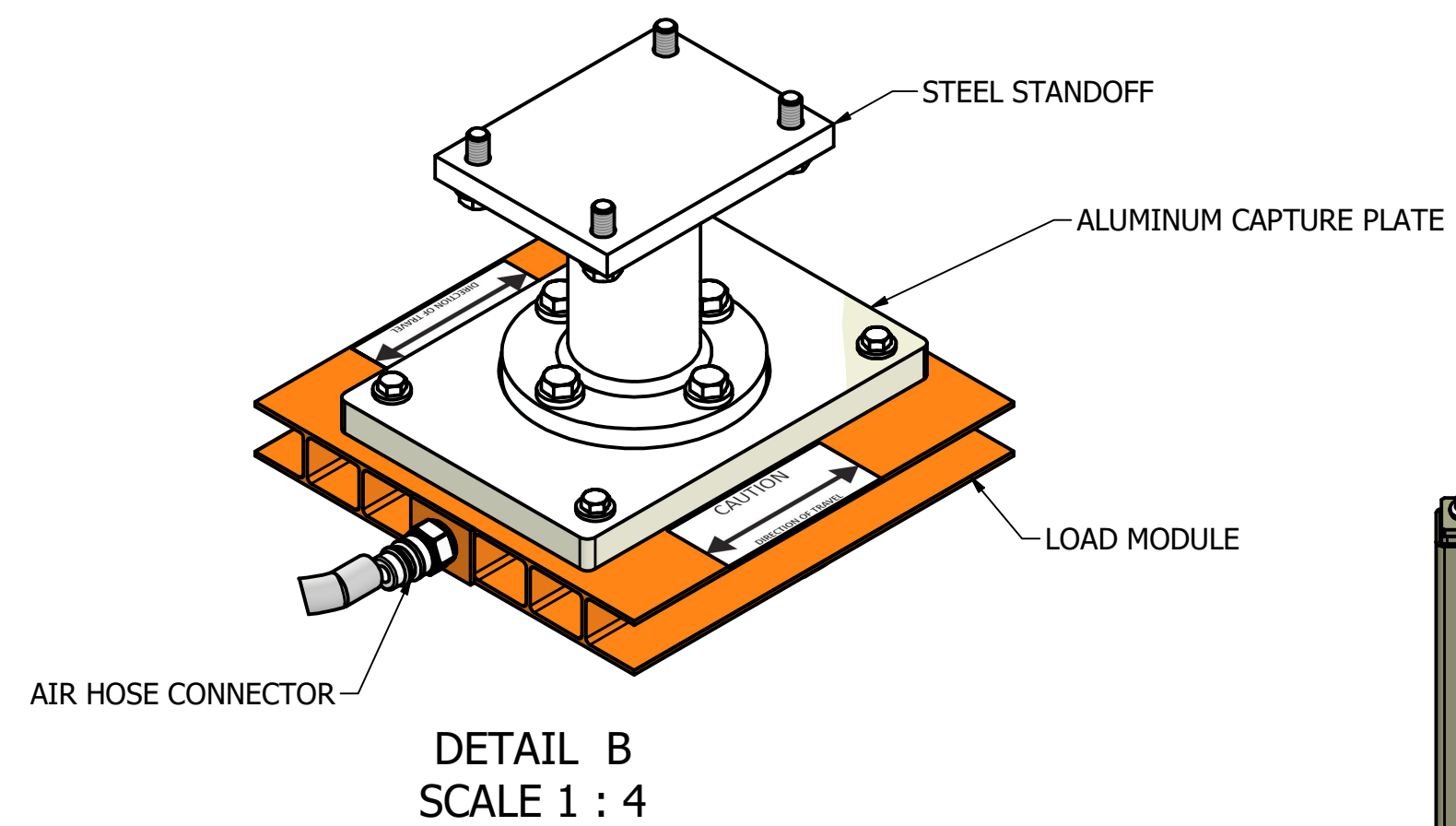
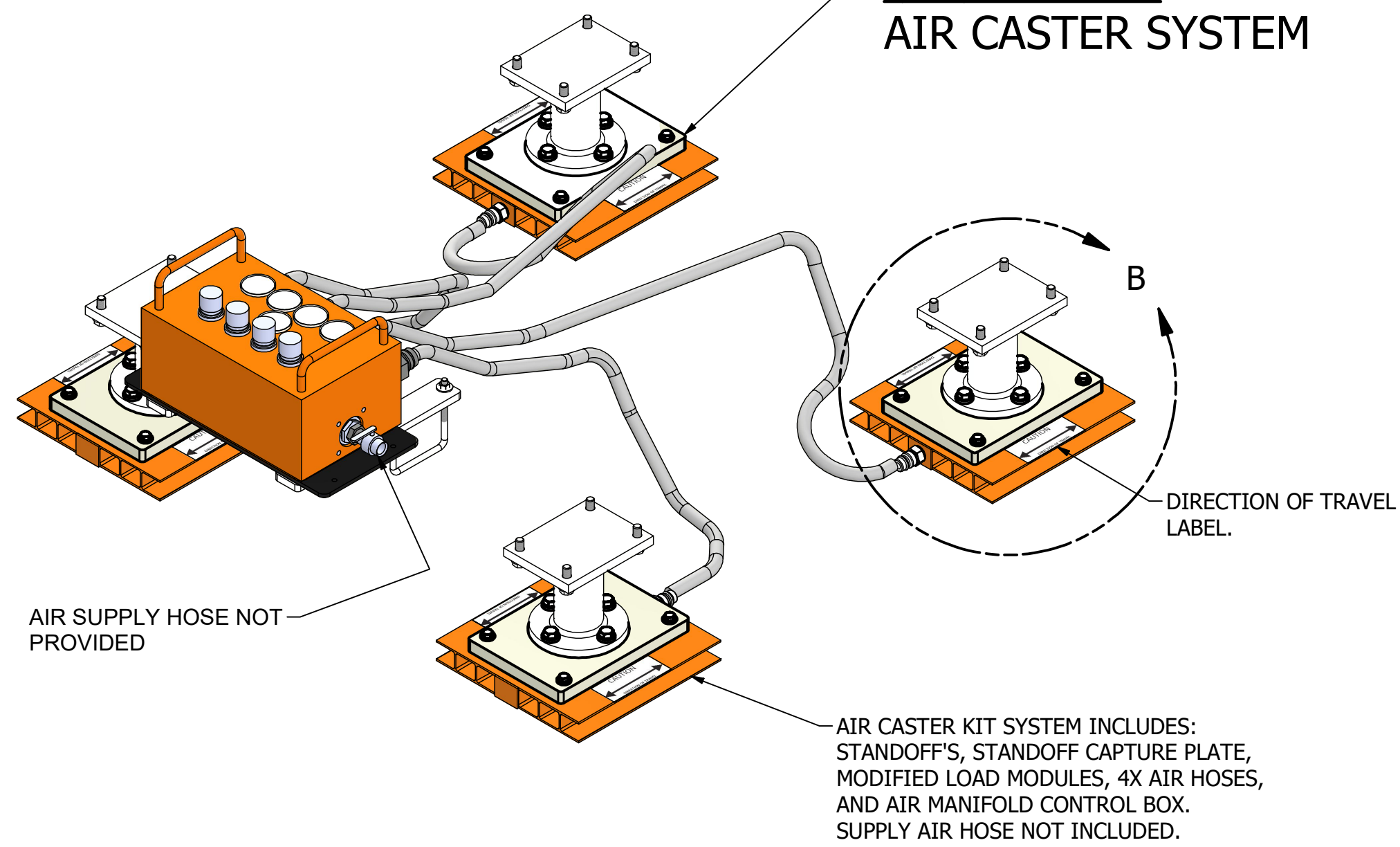
PROPRIETARY This Drawing is the property of FLOTTRON, Inc. and is not to be used, copied or reproduced in any way other than for the particular purpose for which it is provided, and when said purpose has been fulfilled, it should be destroyed or returned to FLOTTRON, Inc.	<small>UNLESS OTHERWISE SPECIFIED DIMENSIONS ARE IN INCHES</small> LINEAR TOLERANCES: ±.03 ANGULAR TOLERANCES: ±.5° XX .XXX <small>DO NOT SCALE DRAWING INTERPRET DIMENSIONING AND TOLERANCING PER ASME Y14.5-2018 INTERPRET DWG. PER ASME Y14.100</small>	2630 PROGRESS STREET VISTA, CALIFORNIA 92081 http://www.flotron.com
	SATELLITE MOBILE STAND (SMS)	
SCALE: 1 : 6 SIZE: D DRAWING NO.: 8049-100PROP WT: 2167.0 lbmass Cad software: Inventor	SHEET 1 OF 5	



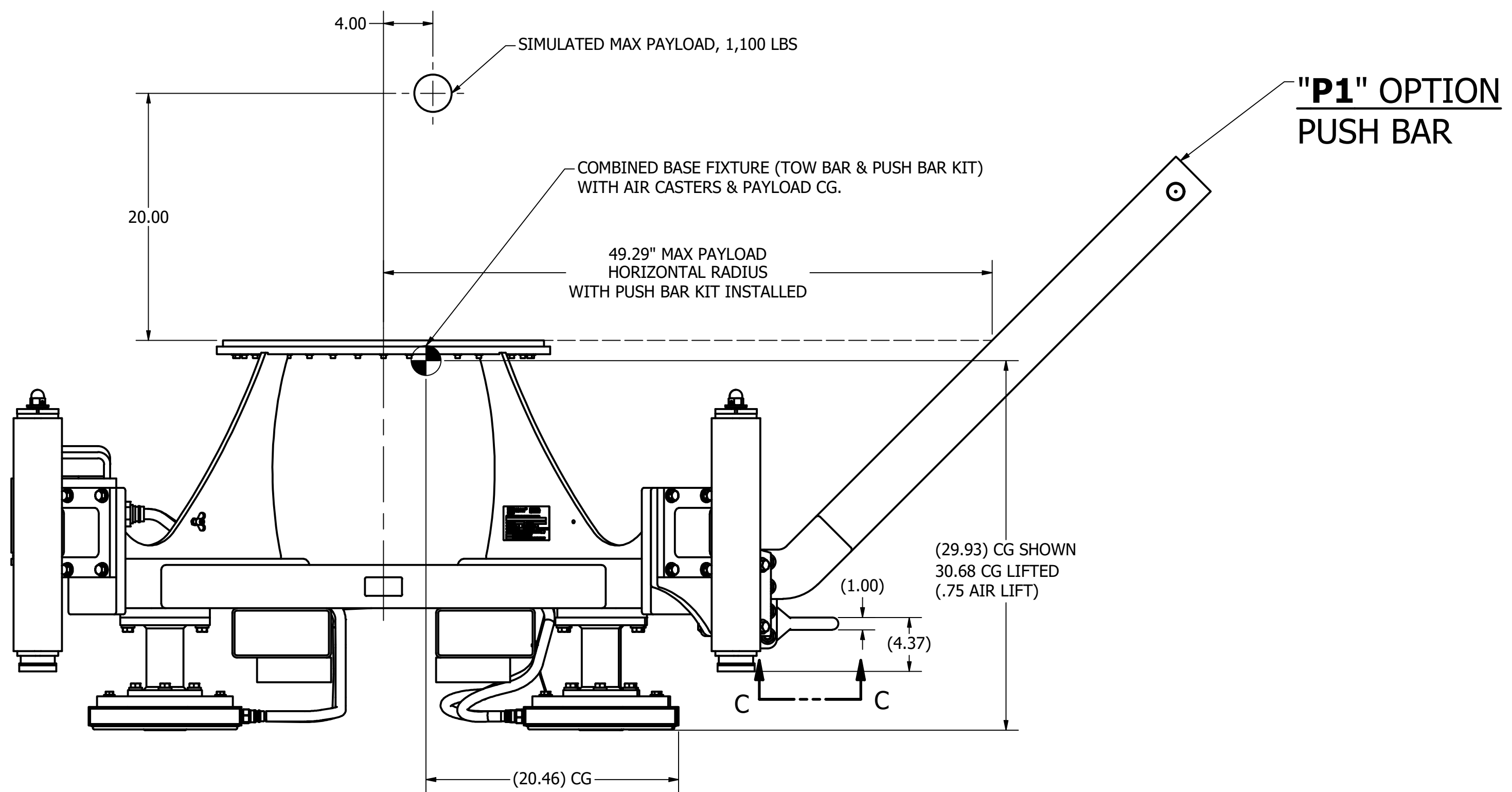
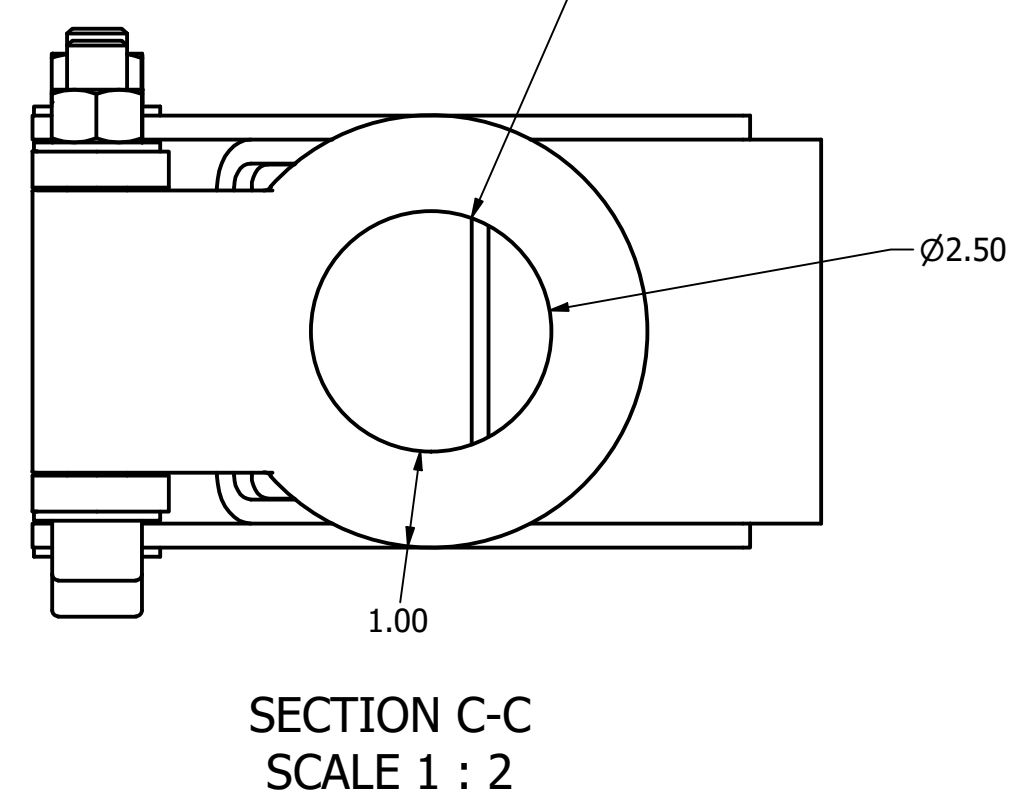
This Drawing is the property of FLOTRON, Inc. and is not to be used, copied or reproduced in any way other than for the particular purpose for which it is provided, and when said purpose has been fulfilled, it should be destroyed or returned to FLOTRON, Inc.

		2630 PROGRESS STREET VISTA, CALIFORNIA 92081 http://www.flotron.com	
SCALE	SIZE	DRAWING NO.	REV
1 : 6	D	8049-100PROP	
SHEET			2 OF 5

**"AC" OPTION
AIR CASTER SYSTEM**



**"T2" OPTION
TOW RING**

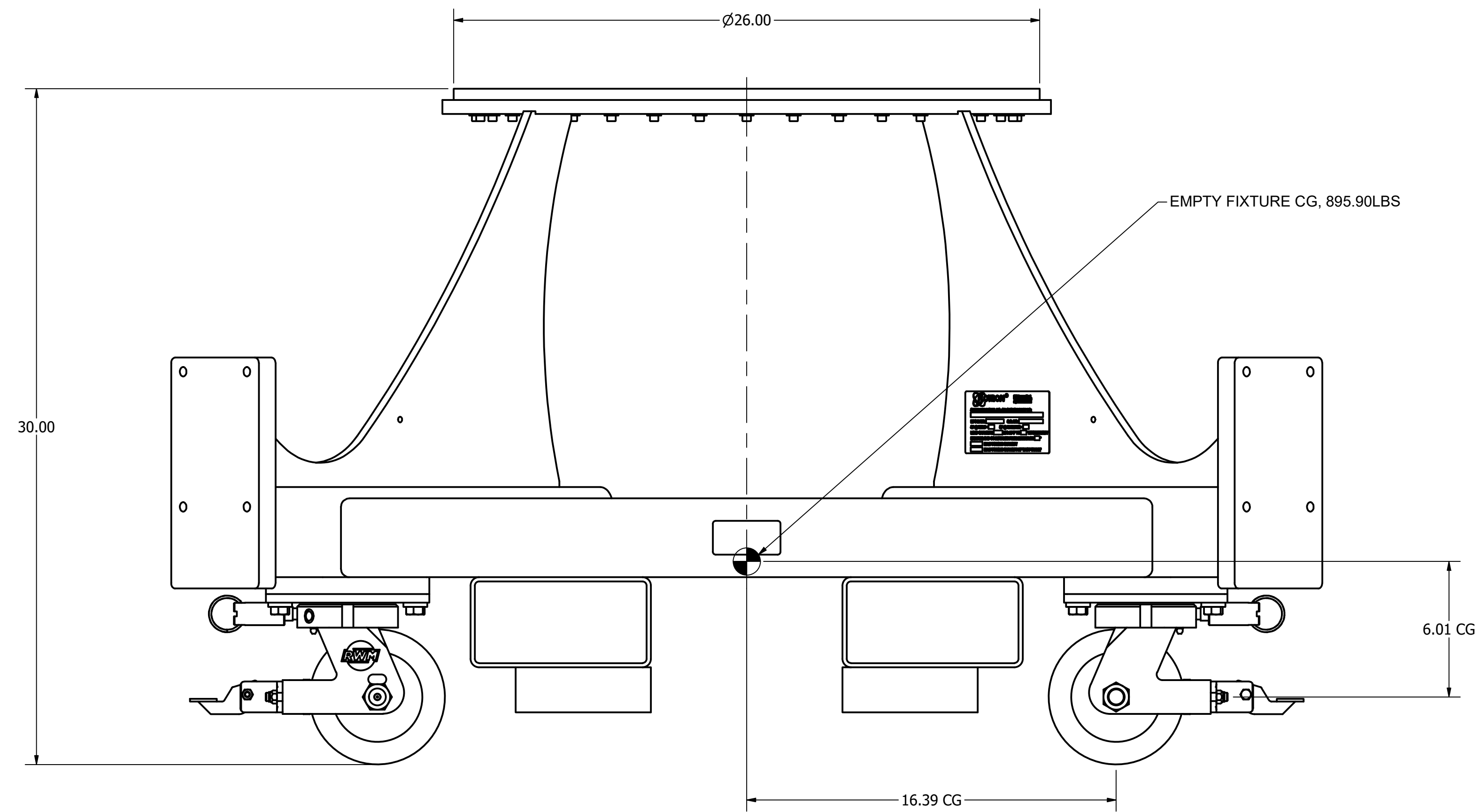


LATERAL STABILITY ON AIR CASTERS:
20.46 / 30.68 = .67G

This Drawing is the property of FLOTRON, Inc. and is not to be used, copied or reproduced in any way other than for the particular purpose for which it is provided, and when said purpose has been fulfilled, it should be destroyed or returned to FLOTRON, Inc.

		2630 PROGRESS STREET VISTA, CALIFORNIA 92081 http://www.flotron.com	
SCALE	SIZE	DRAWING NO.	REV
1 : 6	D	8049-100PROP	
			SHEET 3 OF 5

EMPTY FIXTURE CG



LATERAL STABILITY ON CASTERS,
BASE MOBILE STAND WITH NO OPTIONS:
 $16.39 / 6.01 = 2.72G$

This Drawing is the property of FLOTRON, Inc. and is not to be used, copied or reproduced in any way other than for the particular purpose for which it is provided, and when said purpose has been fulfilled, it should be destroyed or returned to FLOTRON, Inc.

		2630 PROGRESS STREET VISTA, CALIFORNIA 92081 http://www.flotron.com	
SCALE	SIZE	DRAWING NO.	REV
1 : 6	D	8049-100PROP	
SHEET			4 OF 5

PROOF LOAD TEST (PLT) PROCEDURE

PROOF LOAD REQUIREMENTS:

PROOF LOAD WEIGHT = 2 X 1,100 LBS = **2,200 LBS (MIN)**

STATIC PROOF LOAD TEST PROCEDURE:

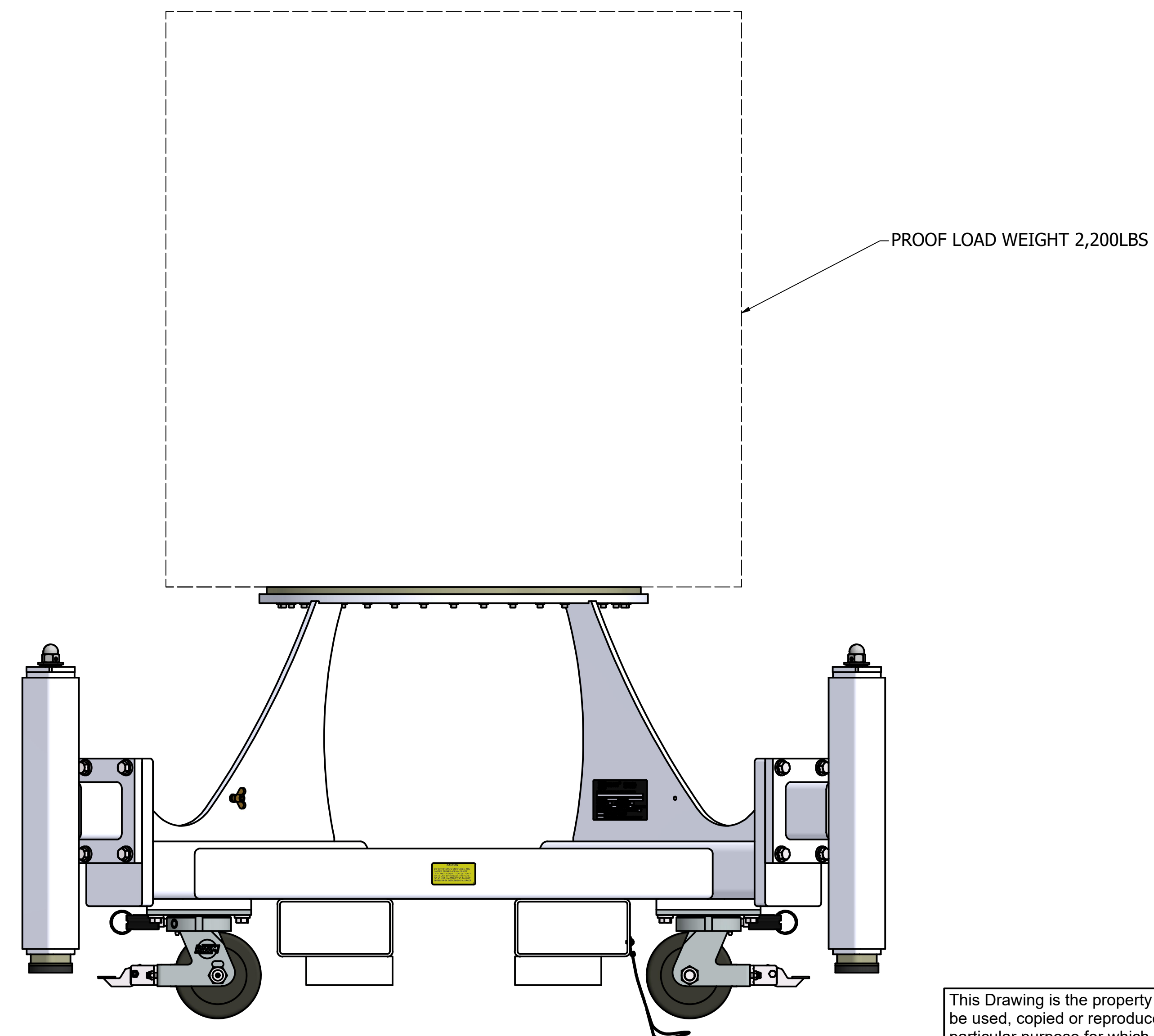
1. VERIFY THAT ALL STRUCTURAL COMPONENTS HAVE BEEN PROPERLY ASSEMBLED AND ALL BOLTS HAVE BEEN TORQUED.
2. WEIGH PROOF LOAD TO MAKE SURE IT MEETS REQUIREMENT AND TAKE A PICTURE OF PROOF LOAD ON SCALE WITH LOAD VALUE ON SCALE VISIBLE FOR PROOF LOAD REPORT.
3. WHILE SUPPORTING PROOF LOAD WEIGHT TORQUE PROOF LOAD MOUNTING BOLTS THEN SLOWLY OFFLOAD PROOF LOAD WEIGHT ONTO FIXTURE.
4. STOP AS REQUIRED TO REVIEW AND INSPECT ANY UNEXPECTED NOISES OR MOVEMENTS.
5. START TIMER, TAKE A PICTURE OF CLOCK ON FIXTURE, AND HOLD FOR (5) FIVE MINUTES.
AFTER 5 MINUTES, TAKE A SECOND PICTURE OF CLOCK ON FIXTURE AND VISUALLY INSPECT FOR CRACKS, DEFORMATION, ETC.

IF JACK (J5) OPTION IS CHOSEN:

1. LOWER ALL JACKS TO CONTACT THE FLOOR WITHOUT COMPLETELY OFFLOADING WEIGHT FROM CASTERS.
2. AT ONE JACK LOCATION, EXTEND JACK TO RAISE CASTER 1/2" FROM FLOOR.
3. REVIEW THE REMAINING JACK POSITIONS AND DOCUMENT CLEARANCE TO FLOOR IF ANY.
4. EXTEND THE PARTNER JACK MOUNTED ON THE SAME END FRAME TO RAISE THE CASTER 1/2" FROM FLOOR LEVEL.
5. FOLLOW THE PROCEDURE ON THE OPPOSITE END FRAME.
6. START TIMER, TAKE A PICTURE OF CLOCK ON FIXTURE, AND HOLD FOR (5) FIVE MINUTES.
AFTER 5 MINUTES, TAKE A SECOND PICTURE OF CLOCK ON FIXTURE AND VISUALLY INSPECT FOR CRACKS, DEFORMATION, ETC.

DELIVERABLE REPORT REQUIRED. IT MUST INCLUDE:

- A) A SUMMARY OF THE TEST PROCEDURE
- B) A PICTURE OF THE ACTUAL MEASURED WEIGHT OF PROOF LOAD ON SCALE.
WEIGHT MUST BE EQUAL TO OR HIGHER THAN REQUIRED WEIGHT.
- C) PICTURE OF TIMER WITH PROOF LOAD THAT SHOWS 5 MINUTES OR LONGER FOR EACH TEST.
- D) VISUAL INSPECTION RESULTS



This Drawing is the property of FLOTRON, Inc. and is not to be used, copied or reproduced in any way other than for the particular purpose for which it is provided, and when said purpose has been fulfilled, it should be destroyed or returned to FLOTRON, Inc.

		2630 PROGRESS STREET VISTA, CALIFORNIA 92081 http://www.flotron.com	
SCALE	SIZE	DRAWING NO.	REV
1 : 6	D	8049-100PROP	
			SHEET 5 OF 5