

9. SEE SHEET 6 FOR HARDWARE AND LUBRICATION INFORMATION.
8. CONFIGURATION SHOWN ON THIS SHEET: LJ-C-4500-J2
7. SEE SHEET 3 FOR CASTER JACK (C2) AND CASTER MOUNTING PLATE (C1) OPTIONS.
6. IN LIEU OF USING THE PROVIDED HAND CRANK, A HAND DRILL CAN BE USED TO ROTATE THE INPUT CLUTCH/SHAFT. SINCE THIS JACK HAS A CLUTCH, THE USER DOES NOT NEED TO WORRY ABOUT DAMAGING JACK FROM OVER TORQUING.
5. JACK HANDLE ORIENTATION CAN BE ROTATED +/-90° FROM WHAT IS SHOWN ON THIS VIEW BY REMOVING FASTENERS FROM TOP CAP AND ROTATING 90°. "J2" HANDLE ORIENTATION SHOWN.
4. 20 TURNS OF HANDLE PER INCH LIFT OF JACK.
3. FINISHES: CLASS 1K (ISO 6)/CLEAN ROOM COMPATIBLE AND NO ZINC.
2. LUBRICANTS: SYNCO SUPER LUBE GREASE STANDARD ON SCREW THREADS AND GEAR TEETH.
KRYTOX LVP LUBRICANT ON SCREW THREADS AND GEAR TEETH WITH (L1) LUBRICANT OPTION.
BRAYCOTE LUBRICANT ON SCREW THREADS AND GEAR TEETH WITH (L2) LUBRICANT OPTION.
1. LEVELING JACK CAPACITY: SIMULTANEOUS 4,500 LBS [2,041 KG] VERTICAL LOAD & 2,250 LB [1,020 KG] SIDE LOAD WITH SFy=3 & SFu=5.

NOTES:

PROPRIETARY
This Drawing is the property of FLOTRON, Inc. and is not to be used, copied or reproduced in any way other than for the particular purpose for which it is provided, and when said purpose has been fulfilled, it should be destroyed or returned to FLOTRON, Inc.

UNLESS OTHERWISE SPECIFIED
DIMENSIONS ARE IN INCHES

LINEAR TOLERANCES:	ANGULAR TOLERANCES:
±.03	±.010
.XX	.XXX

DO NOT SCALE DRAWING
INTERPRET DIMENSIONING AND TOLERANCING PER ASME Y15.5-2018
INTERPRET DWG. PER ASME Y14.100



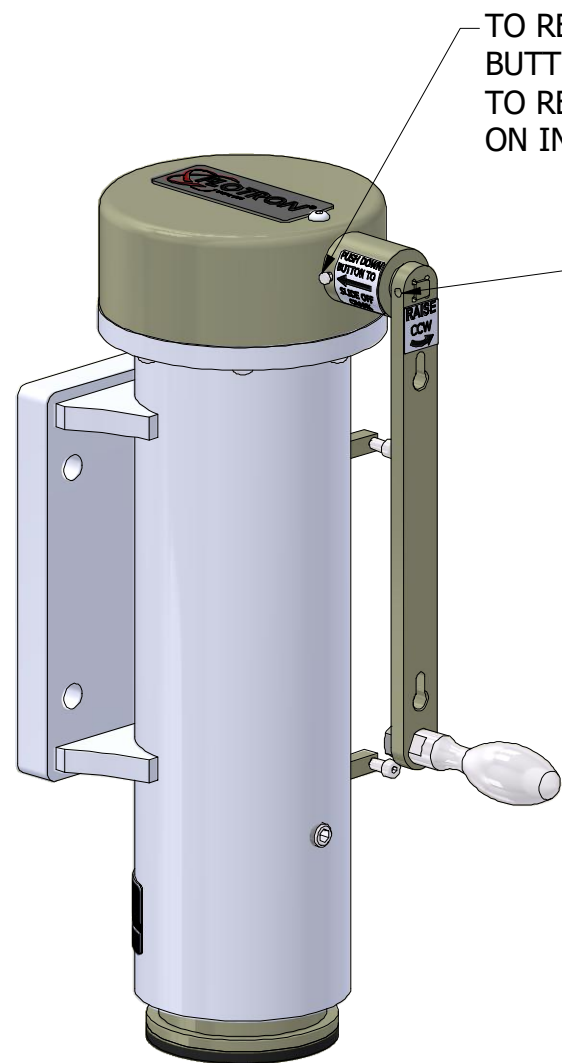
2630 PROGRESS STREET
VISTA, CALIFORNIA 92081
<http://www.flotron.com>

**JACK, LEVELING & CASTER,
CJ-3250 & LJ-4500**

SCALE	SIZE	DRAWING NO.
1 : 4	B	8026-020PROP
WT: 62.3 lbmass	Cad software: Inventor	SHEET 1 OF 6

HAND CRANK STOWAGE

IT IS RECOMMENDED WHEN NOT RAISING OR LOWERING JACK TO STOW CRANK ASSEMBLY SO HANDLE & CLUTCH DOES NOT ACCIDENTALLY GET ROTATED OR DAMAGED. THIS IS ESPECIALLY IMPORTANT DURING TRANSPORTATION OF FIXTURE OF ANY KIND.

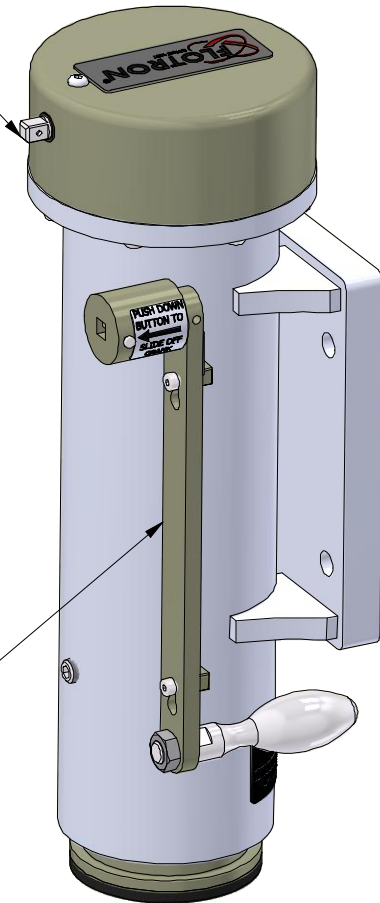


TO REMOVE CRANK AND CLUTCH, PUSH AND HOLD DOWN BUTTON AND SLIDE OFF CRANK FROM INPUT SHAFT. TO RE-INSTALL, MANUALLY PUSH DOWN SPRING PIN ON INPUT SHAFT WITH FINGER AND SLIDE ON CLUTCH.

IF OPERATOR WANTS TO USE A HAND DRILL TO RAISE OR LOWER JACK, HANDLE CAN BE REMOVED AND STOWED WITH CLUTCH STILL INSTALLED. TO REMOVE HANDLE FROM CLUTCH. USE A SMALL DIAMETER PIN (APPROX. Ø1/8") TO PUSH IN SPRING PIN ON CLUTCH SHAFT. HANDLE CAN THEN BE SLID OFF AND STOWED.

6
STANDARD 3/8"
SQUARE SOCKET
DRIVE

CRANK ASSEMBLY SHOWN
IN STOWED POSITION



This Drawing is the property of FLOTRON, Inc. and is not to be used, copied or reproduced in any way other than for the particular purpose for which it is provided, and when said purpose has been fulfilled, it should be destroyed or returned to FLOTRON, Inc.

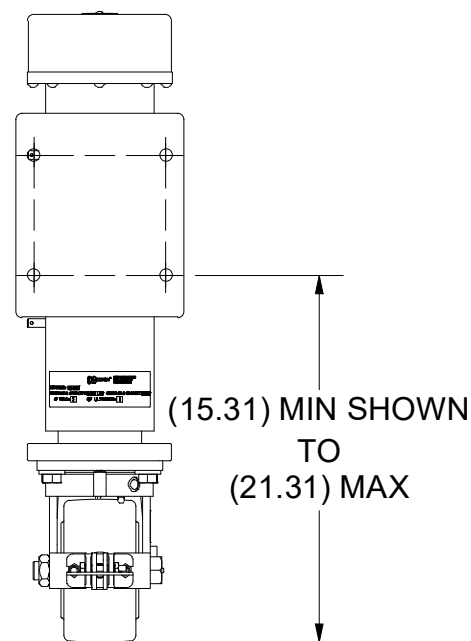
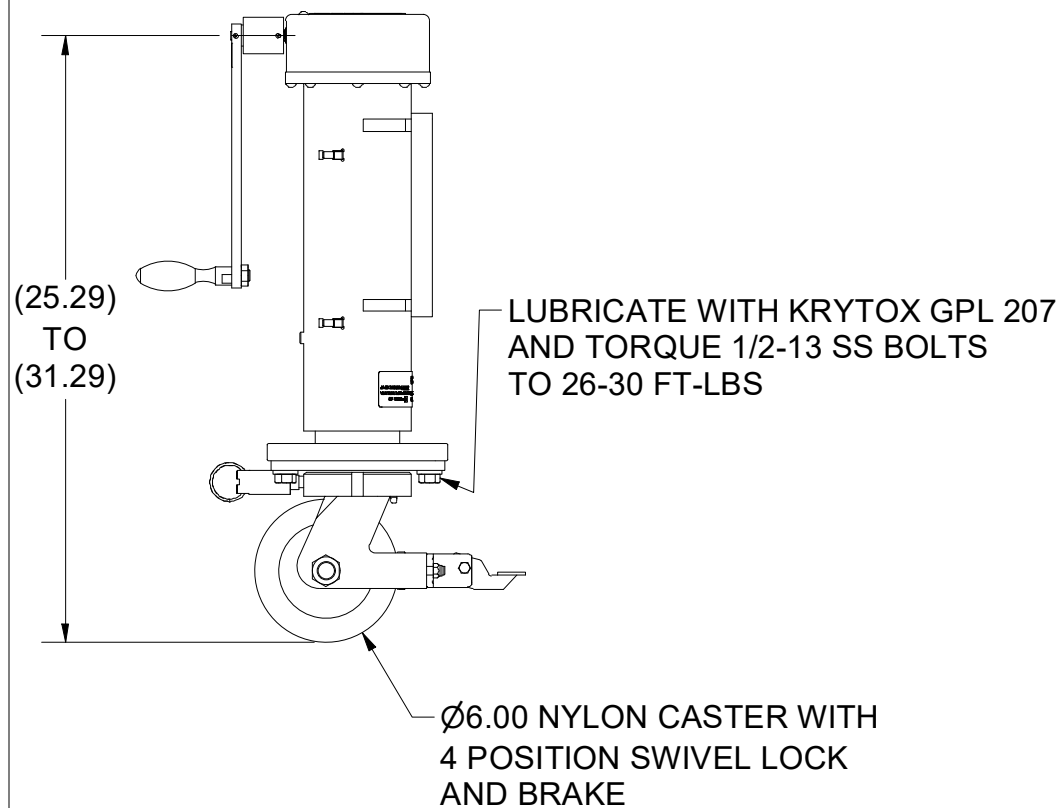
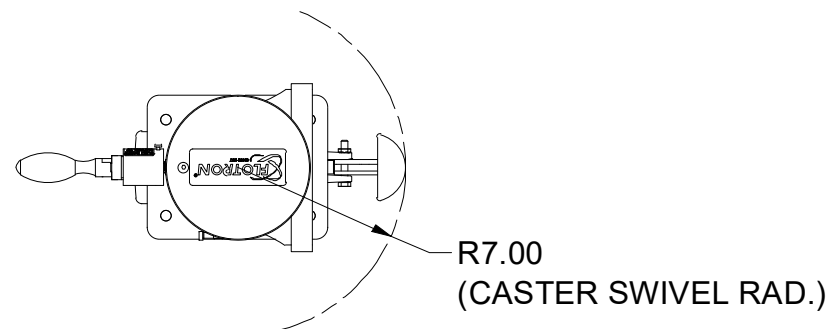
FLOTRON[®]

2630 PROGRESS STREET
VISTA, CALIFORNIA 92081
<http://www.flotron.com>

SCALE	VARIES	SIZE	B	DRAWING NO.	8026-020PROP
					SHEET 2 OF 6

CJ-3250 CASTER JACK OPTIONS

C2 OPTION



4. CJ-3250-C2 CAPACITY: SIMULTANEOUS 3,250 LBS [1,474 KG] VERTICAL LOAD & 1,625 LB [737 KG] SIDE LOAD ON CASTER WHEEL WITH SF_y=3 & SF_u=5.

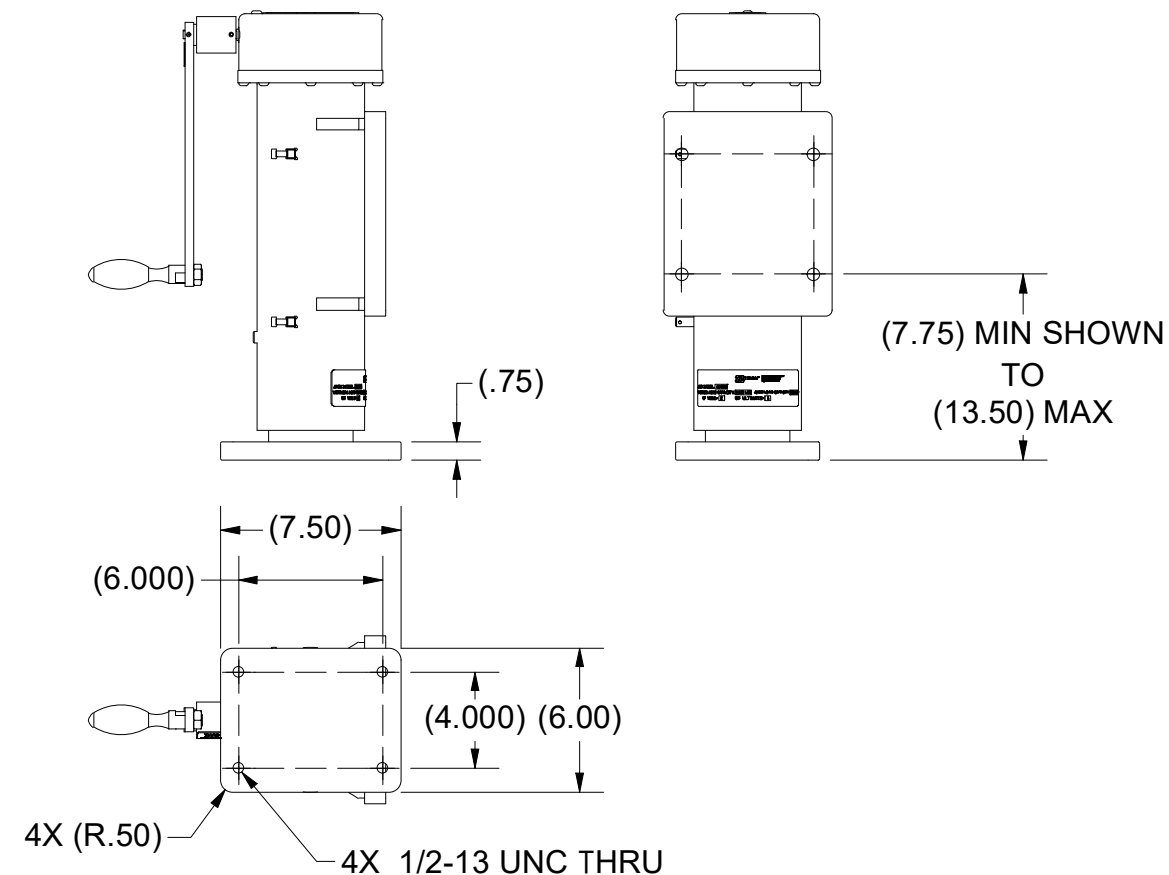
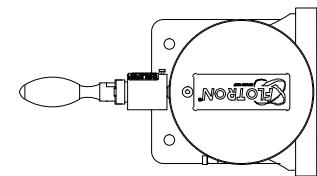
3. LUBRICATION:
(BLANK) - SCREW AND GEARS LUBRICATED WITH SYNCO SUPER LUBE GREASE (MMC #1353K1).
CASTER SWIVEL BEARING & AXLE LUBRICATED WITH GENERAL PURPOSE BEARING GREASE.
(L1) - SCREW, GEARS, CASTER SWIVEL BEARING & AXLE LUBRICATED WITH KRYTOX LVP
(L2) - SCREW, GEARS, CASTER SWIVEL BEARING & AXLE LUBRICATED WITH BRAYCOTE 601EF

2. WEIGHT OF CONFIGURATION SHOWN IN THIS SECTION: 87 LBS

1. CONFIGURATION SHOWN IN THIS SECTION: CJ-3250-C2-J2 (FOR STANDARD FINISH)
CJ-3250-C-C2-J2 (FOR "C" FINISH)

NOTES:

C1 OPTION



3. CJ-3250-C1 CAPACITY: SIMULTANEOUS 3,250 LBS [1,474 KG] VERTICAL LOAD & 1,625 LB [737 KG] SIDE LOAD ON CASTER WHEEL WITH SF_y=3 & SF_u=5.

2. WEIGHT OF CONFIGURATION SHOWN IN THIS SECTION: 72 LBS

1. CONFIGURATION SHOWN IN THIS SECTION: CJ-3250-C1-J2 (FOR STANDARD FINISH)
CJ-3250-C1-J2 (FOR "C" FINISH)

NOTES:

This Drawing is the property of FLOTRON, Inc. and is not to be used, copied or reproduced in any way other than for the particular purpose for which it is provided, and when said purpose has been fulfilled, it should be destroyed or returned to FLOTRON, Inc.



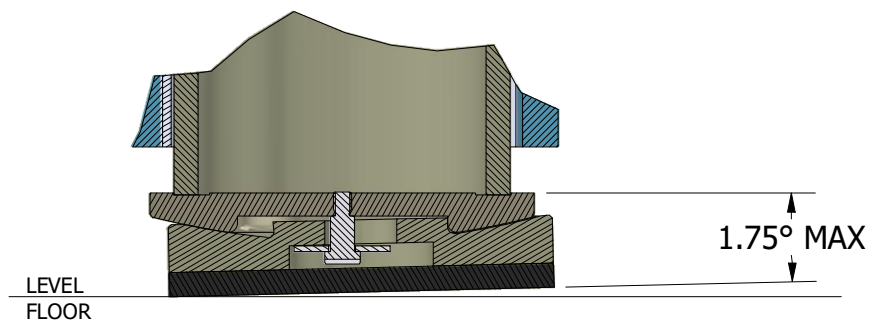
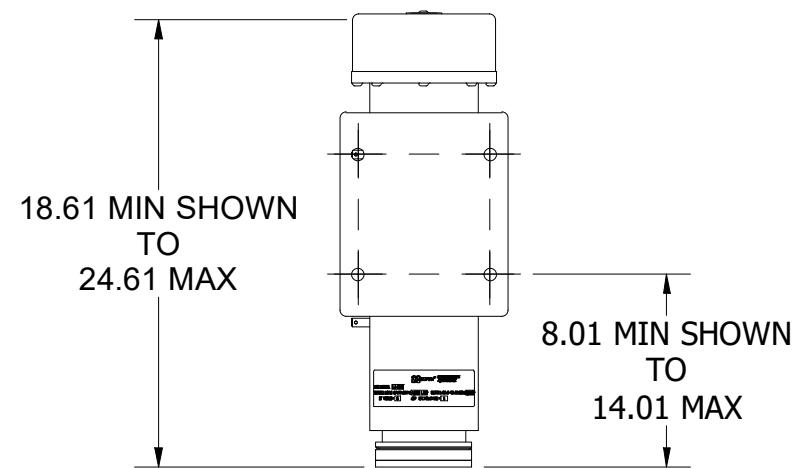
2630 PROGRESS STREET
VISTA, CALIFORNIA 92081
<http://www.flotron.com>

SCALE	VARIES	SIZE	B	DRAWING NO.	8026-020PROP
					SHEET 3 OF 6

F1 OPTION

LEVELING FOOT ON BOTTOM OF JACK RAM FOR SEVERELY UNEVEN FLOORS.
 LEVELING FOOT ACCOMMODATES 1.75° FLOOR DEVIATION PER JACK.
 WHEN INDEXING JACK DOWN TO FLOOR, MAKE SURE BOTTOM OF JACK PAD IS
 PARALLEL TO FLOOR. ADJUST ANGLE OF PAD WITH HAND AS NECESSARY
 TO MAKE PARALLEL.

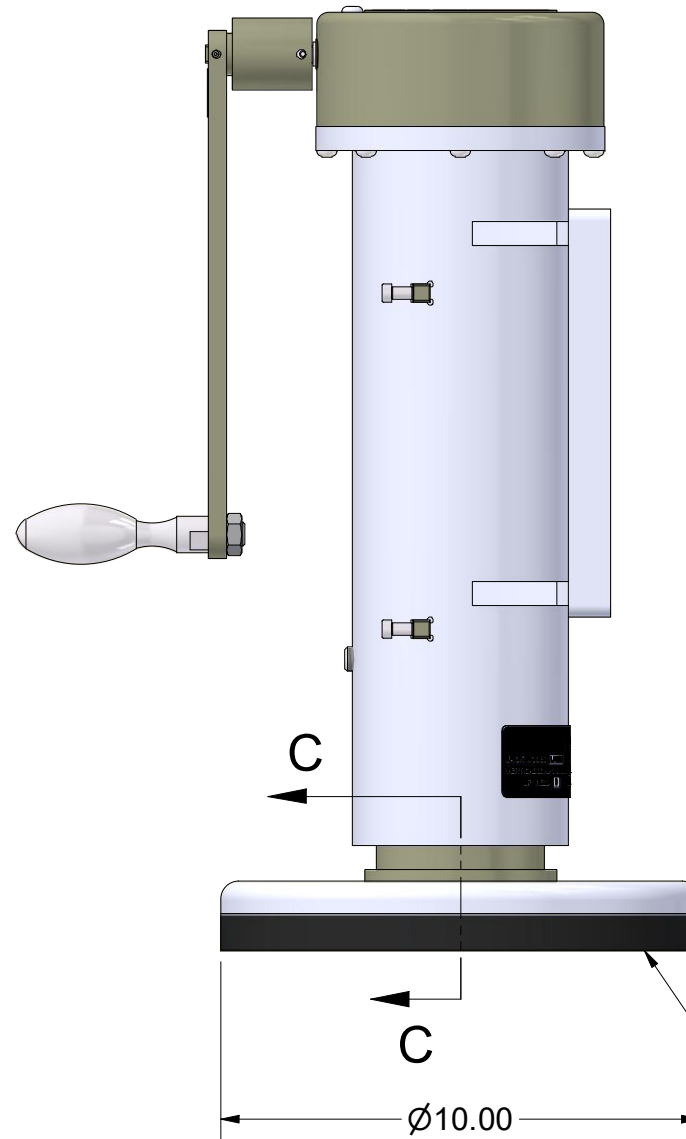
LJ-4500-F1-J2



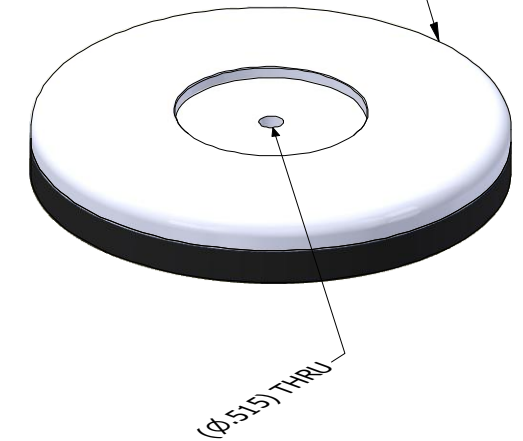
MAX FLOOR DEVIATION PER JACK
 WITH (F1) OPTION

V OPTION

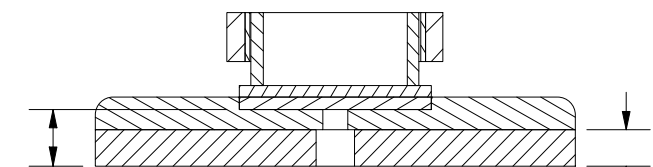
SORBOTHANE (VISCO-ELASTIC POLYMER) PAD INCLUDED TO PROTECT
 SENSITIVE ELECTRONIC FROM FLOOR VIBRATIONS.
 PAD CAN ABSORB 75% OF FLOOR VIBRATIONS AT FREQUENCIES FROM 10 TO 30,000 HERTZ.
 SORBOTHANE WILL COMPRESS APPROXIMATELY .19" UNDER A 4,500 LB MAX LOAD.
 WITH PAD, JACK CAN ACCOMMODATE 1.5° FLOOR DEVIATION PER JACK.



PAD IS NOT ATTACHED TO JACK
 AND NEEDS TO BE STORED
 SEPARATELY WHEN NOT IN USE



1.19 HEIGHT ADDED BY OPTION
 (NOT INCLUDING COMPRESSION OF PAD)



.75
 (SORBOTHANE
 PAD THICKNESS)

SECTION C-C

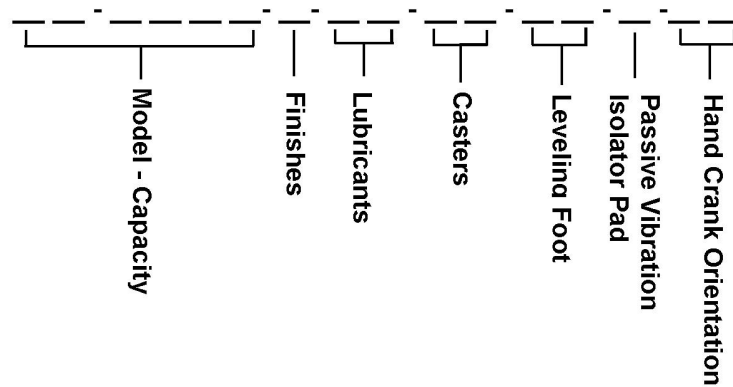
IF REQ'D, CLEAN RUBBER PAD WITH A 50% MIXTURE
 OF WHITE VINEGAR AND WATER
 (DO NOT CLEAN WITH ISOPROPYL ALCOHOL)

This Drawing is the property of FLOTRON, Inc. and is not to be used, copied or reproduced in any way other than for the particular purpose for which it is provided, and when said purpose has been fulfilled, it should be destroyed or returned to FLOTRON, Inc.



2630 PROGRESS STREET
 VISTA, CALIFORNIA 92081
<http://www.flotron.com>

SCALE	VARIES	SIZE	B	DRAWING NO.	8026-020PROP
					SHEET 4 OF 6



Model - Capacity:

- LJ-3750 - Leveling Jack - 3,750 lb (1,701 kg) capacity
- LJ-4500 - Leveling Jack - 4,500 lb (2,041 kg) capacity
- LJ-8500 - Leveling Jack - 8,500 lb (3,855 kg) capacity
- CJ-2500 - Caster Jack – 2,500 lb (1,134 kg) capacity
- CJ-3250 - Caster Jack – 3,250 lb (1,474 kg) capacity
- CJ-6000 - Caster Jack – 6,000 lb (2,721 kg) capacity

Finishes:

- (blank) - Standard finishes – Exposed jack components nickel plated. Stainless steel fasteners.
- C - - - - Clean room finishes - Same as standard finish with sky white color housing.

Lubricants:

- (blank) - Standard lubricant – Jack screw lubricated with Synco Super Lube grease. General purpose bearing grease in casters (if applicable)
- L1 - - - - Jack screw and caster lubricated with Krytox LVP
- L2 - - - - Jack screw and caster lubricated with Braycote 601EF

Casters:

- (blank) – No casters for leveling jack (LJ models)
- C1 - - - - Standard mounting plate on bottom of jack for caster (No caster provided - see dwg. for dim's)
- C2 - - - - Standard Ø6” nylon caster with brake and swivel lock. See jack drawing for more dimensional detail and information.

Leveling Foot:

- (blank) – No leveling foot – Thin rubber pad on bottom of jack ram only. Pad accommodates 0.50° floor deviation per jack.
- F1 - - - - Leveling foot on bottom of jack ram for severely uneven floors. Leveling foot accommodates 1.75° floor deviation per jack. Optional for LJ-3750 & LJ-4500 models only (comes standard with LJ-8500).

Passive Vibration Isolator Pad:

- (blank) – No Vibration Isolator
- V - - - - Passive vibration isolator pad included to absorb 75% of floor vibrations at frequencies from 10 to 30,000 hertz. Pad is placed under jack.

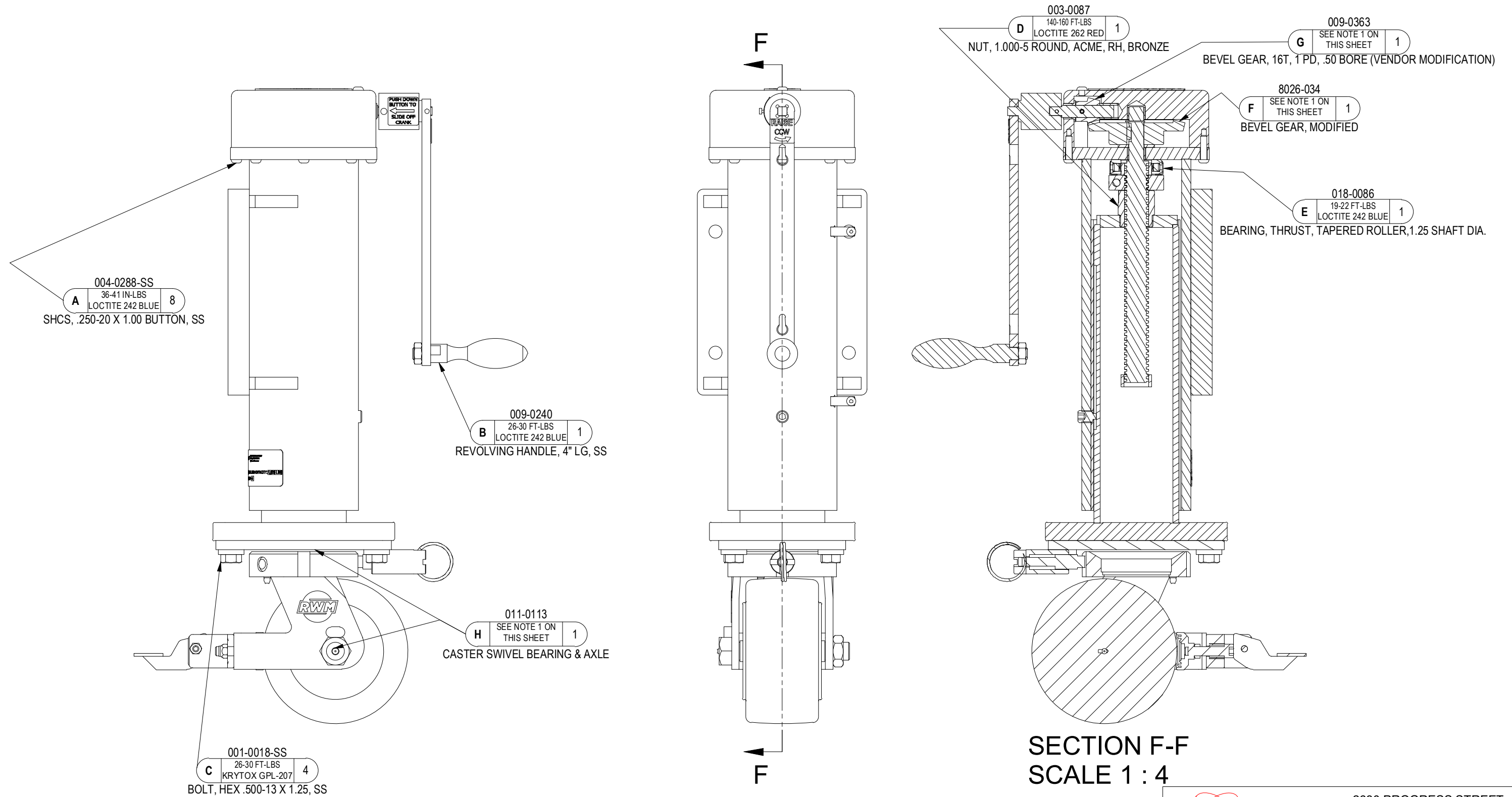
Hand Crank Orientation:

- J2 - - - - See jack handle orientation image.
 - J3 - - - - See jack handle orientation image.
 - J4 - - - - See jack handle orientation image.
- (Note: orientation can be changed on-site by technician. See options section for more information.)

This Drawing is the property of FLOTRON, Inc. and is not to be used, copied or reproduced in any way other than for the particular purpose for which it is provided, and when said purpose has been fulfilled, it should be destroyed or returned to FLOTRON, Inc.

		2630 PROGRESS STREET VISTA, CALIFORNIA 92081 http://www.flotron.com	
SCALE	VARIES	SIZE	B
		DRAWING NO.	8026-020PROP
			SHEET 5 OF 6

BOLT TORQUE AND LUBRICATION INFORMATION



1. LUBRICATION:
 (BLANK) - LUBRICATE SCREW AND GEARS, WITH SYNCO SUPER LUBE GREASE (MMC #1353K1).
 LUBRICATE CASTER SWIVEL BEARING & AXLE WITH GENERAL PURPOSE BEARING GREASE.
 (L1) - LUBRICATE SCREW, GEARS, CASTER SWIVEL BEARING & AXLE WITH KRYTOX LVP
 (L2) - LUBRICATE SCREW, GEARS, CASTER SWIVEL BEARING & AXLE WITH BRAYCOTE 601EF

NOTES

This Drawing is the property of FLOTRON, Inc. and is not to be used, copied or reproduced in any way other than for the particular purpose for which it is provided, and when said purpose has been fulfilled, it should be destroyed or returned to FLOTRON, Inc.



2630 PROGRESS STREET
 VISTA, CALIFORNIA 92081
<http://www.flotron.com>

SCALE	VARIES	SIZE	B	DRAWING NO.	8026-020PROP
					SHEET 6 OF 6