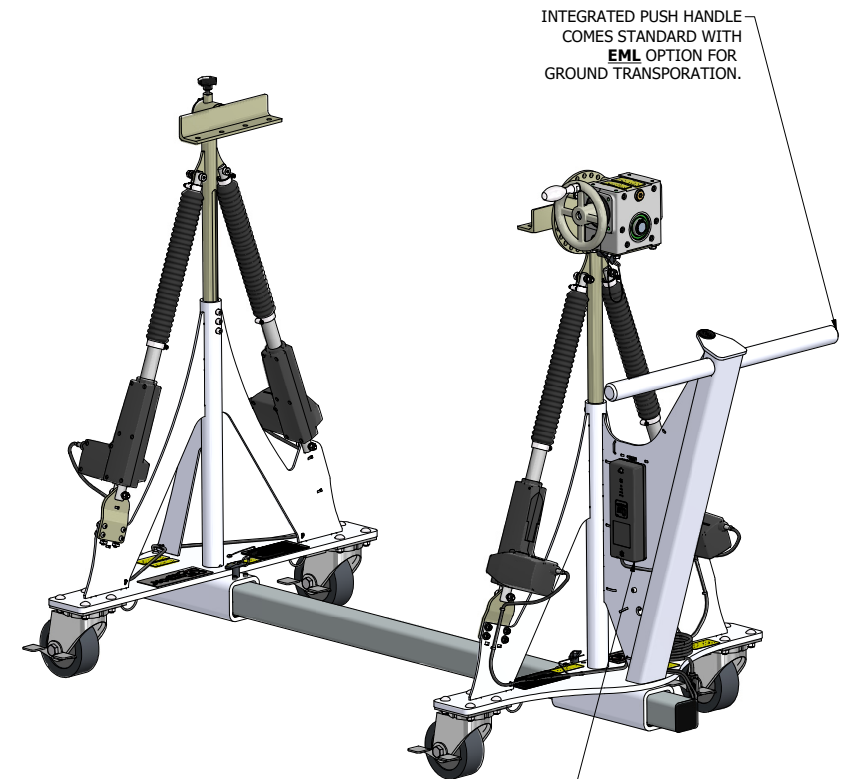
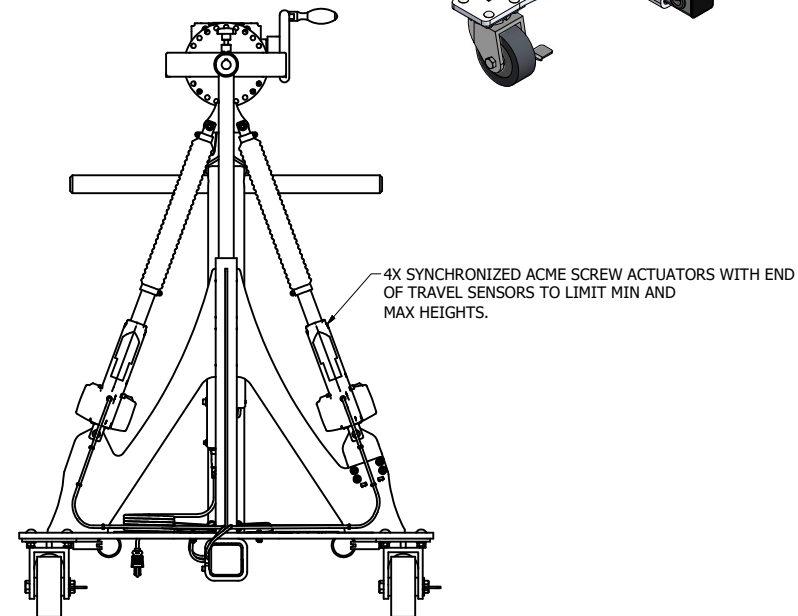
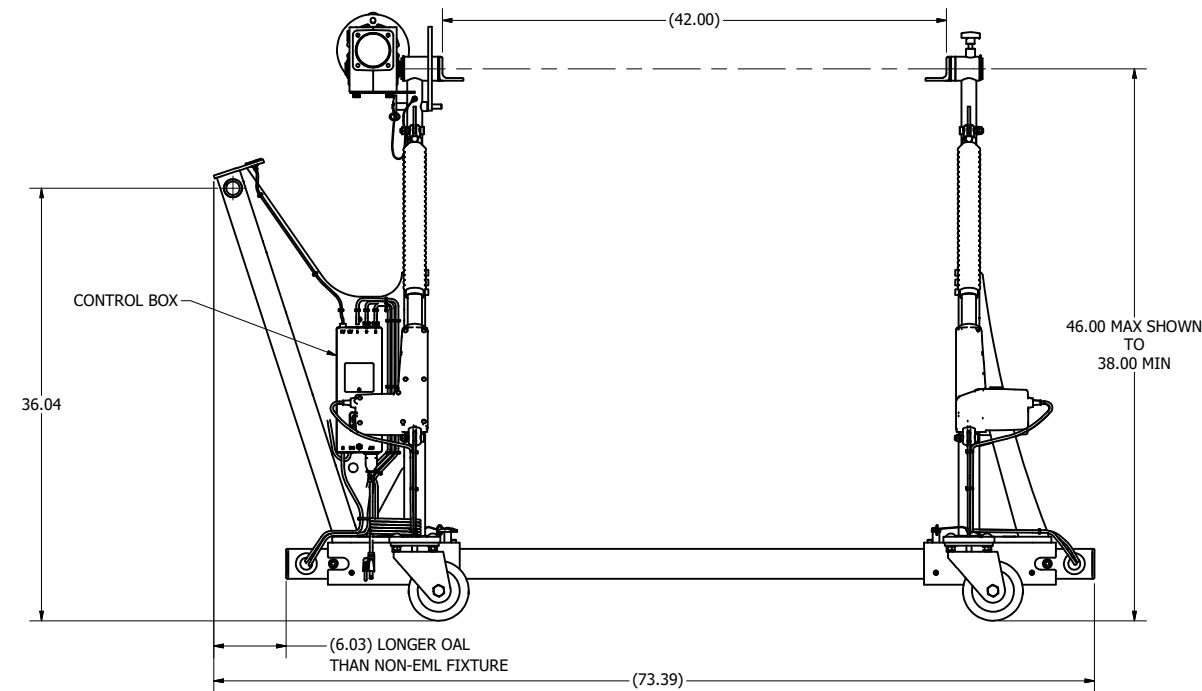
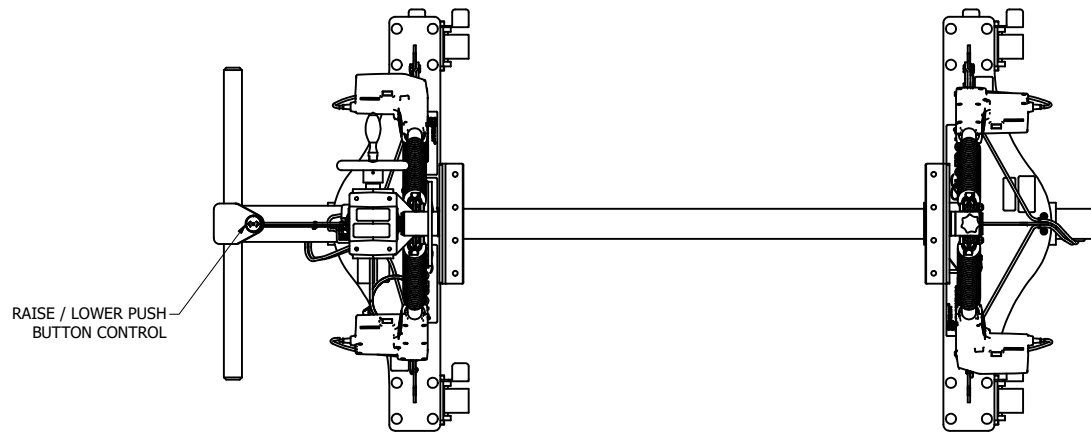


"EML" ELECTROMECHANICAL LIFT



10. MIN/MAX TEMPERATURE FOR ELECTRICAL COMPONENTS: +41°F TO +104°F
9. UNIT WILL RETAIN POSITION WHEN TURNED OFF SO NO HOMING FUNCTION IS NECESSARY DURING NORMAL USE.
8. NOISE LEVEL: 48dB(A); MEASURING METHOD DS/EN ISO 3743-1, WHEN ACTUATOR IS NOT LOADED.
7. DUTY CYCLE: MAX 10% OR 2 MINUTES CONTINUOUS USE (ONE UP/DOWN CYCLE) FOLLOWED BY 18 MINUTES NOT IN USE.
6. THE RAISE AND LOWER SPEED IS FIXED AT 10 INCHES/MINUTE AND IS NOT ADJUSTABLE. BUTTONS CAN BE JOGGED TO RAISE AND LOWER SLOWER IF DESIRED.
5. INPUT POWER: 100-240VAC, 50-60HZ, 300W. A STANDARD 10 FOOT POWER CABLE WITH A 3 PRONG POWER PLUG (NEMA 5-15R) IS PROVIDED.
4. CONFIGURATION SHOWN ON THIS SHEET: SFPC-635-EML-BAT-INDS15-SB10-B042.
3. FINISHES: SAME AS NON-EML VERSION. SEE SHEET 1 NOTES.
2. LOAD RATING (SAME AS STANDARD VERSION): 500 LBS @ 2.55" MAX ECCENTRICITY CONSIDERING A SIMULTANEOUS 1/3G SIDE LOAD (WORST CASE DIRECTION) AND A 1G VERTICAL LOAD. SFy=2 & SFult=3. MAX TORQUE ON GEARBOX 1,275 IN-LBS (700 IN-LBS MAX EASY CRANK)
LOAD RATING: 335 LBS @ 2.53" MAX ECCENTRICITY CONSIDERING A SIMULTANEOUS 1/3G SIDE LOAD (WORST CASE DIRECTION) AND A 1G VERTICAL LOAD. SFy=3 & SFult=5. MAX TORQUE ON GEARBOX 850 IN-LBS (700 IN-LBS MAX EASY CRANK)
1. WEIGHT IN TITLE BLOCK DOES NOT INCLUDE PAYLOAD.

NOTES:

BAT BATTERY POWER OPTION FOR ELECTROMECHANICAL LIFT FIXTURES. BATTERY ALLOWS FOR MULTIPLE LIFT/LOWER CYCLES BEFORE CHARGE IS REQUIRED. EXACT NUMBER OF CYCLES DEPENDS ON PAYLOAD WEIGHT, LOAD ECCENTRICITY, AMBIENT TEMPERATURE, BATTERY AGE, AND LIFT DISTANCE. BATTERY CAN BE CHARGED THROUGH CONTROL BOX OR REMOVED AND CHARGED THROUGH A SEPARATE LINAK SMPS006 CHARGER (NOT PROVIDED). AN ADDITIONAL BATTERY AND SMPS006 CHARGER CAN BE ORDERED TO ENSURE THERE IS ALWAYS A SPARE CHARGED BATTERY. FOR MORE INFORMATION ON BATTERY SEE LINAK BA001 USER MANUAL ONLINE.

This Drawing is the property of FLOTRON, Inc. and is not to be used, copied or reproduced in any way other than for the particular purpose for which it is provided, and when said purpose has been fulfilled, it should be destroyed or returned to FLOTRON, Inc.

		2630 PROGRESS STREET VISTA, CALIFORNIA 92081 http://www.flotron.com	
		SCALE	SIZE
1 : 8	D	DRAWING NO.	REV
		11007-1	-
SHEET			4 OF 4

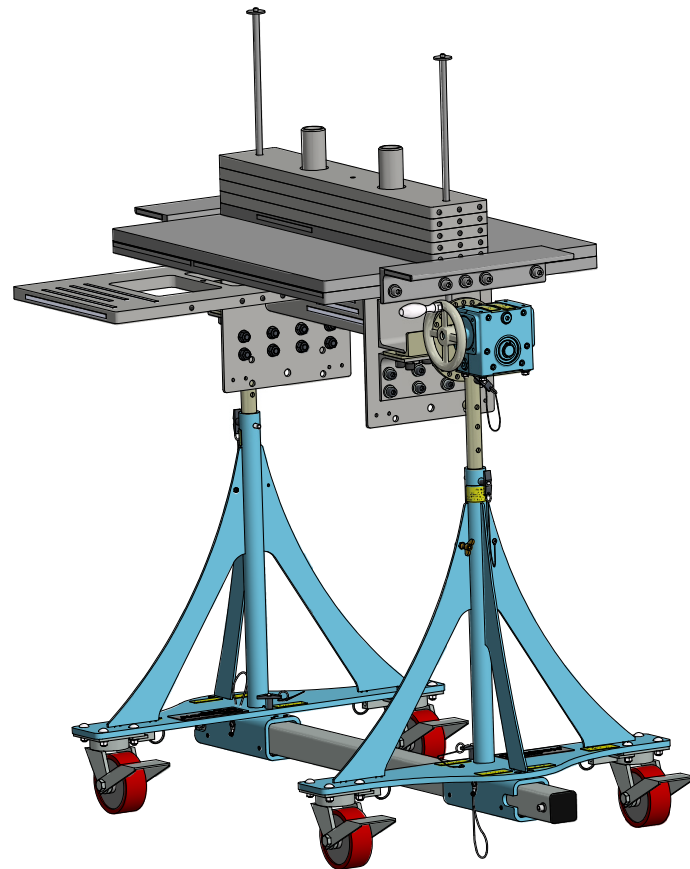
"PLT" STANDARD PROOF LOAD TEST

PLT STANDARD PROOF LOAD TEST
PROOF LOAD TEST PROCEDURE:

DEAD WEIGHT LOAD (NO ROTATION), VISUAL INSPECTION

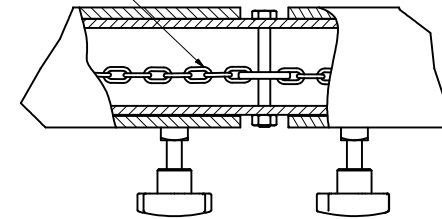
1. STATIC PROOF LOAD TEST.
2. VERTICAL LOAD ONLY.
3. 200% VERTICAL LOAD FOR SFy=3 & 150% FOR SFy = 2, BOTH SCENARIOS @ 100% TORQUE.
4. HOLD LOAD FOR 5 MINUTES MINIMUM.
5. CUSTOMER MAY WITNESS TEST.
6. PAINT AND PLATING COVERS ALL WELDS.
7. VISUALLY INSPECT FOR CRACKS, DEFORMATION, ETC.

A DELIVERABLE PROOF LOAD TEST REPORT WILL BE PROVIDED. THE REPORT WILL INCLUDE A SUMMARY OF THE TEST PROCEDURE, ACTUAL MEASURED WEIGHT OF LOAD APPLIED, VISUAL INSPECTION RESULTS, AND IMAGES OF THE TEST BEING PERFORMED.

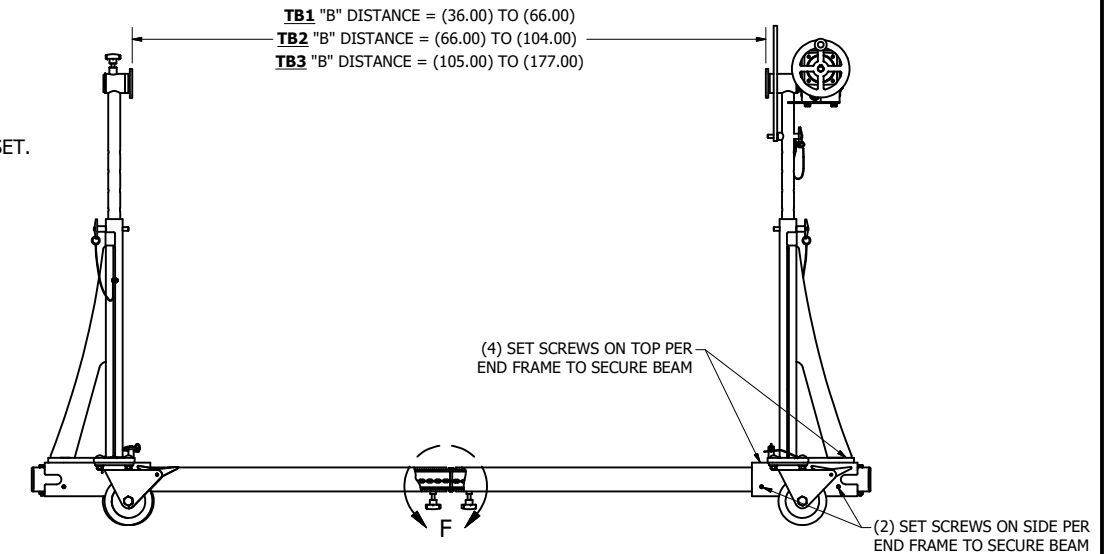


"TB1, TB2, TB3" TELESCOPIC MAIN BEAM

INTERNAL CHAIN WILL NOT ALLOW OVER EXTENSION OF BEAM. TIGHTEN THE HAND KNOBS TO SET POSITION WHEN "B" DISTANCE IS SET.



DETAIL F
SCALE 1 : 2



THIS OPTION REPLACES A TRADITIONAL SET LENGTH MAIN BEAM AND PROVIDES ABILITY

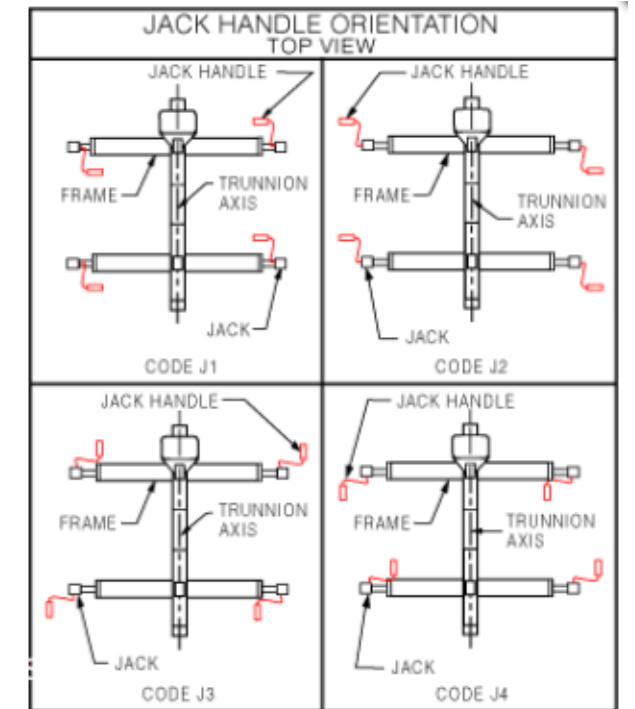
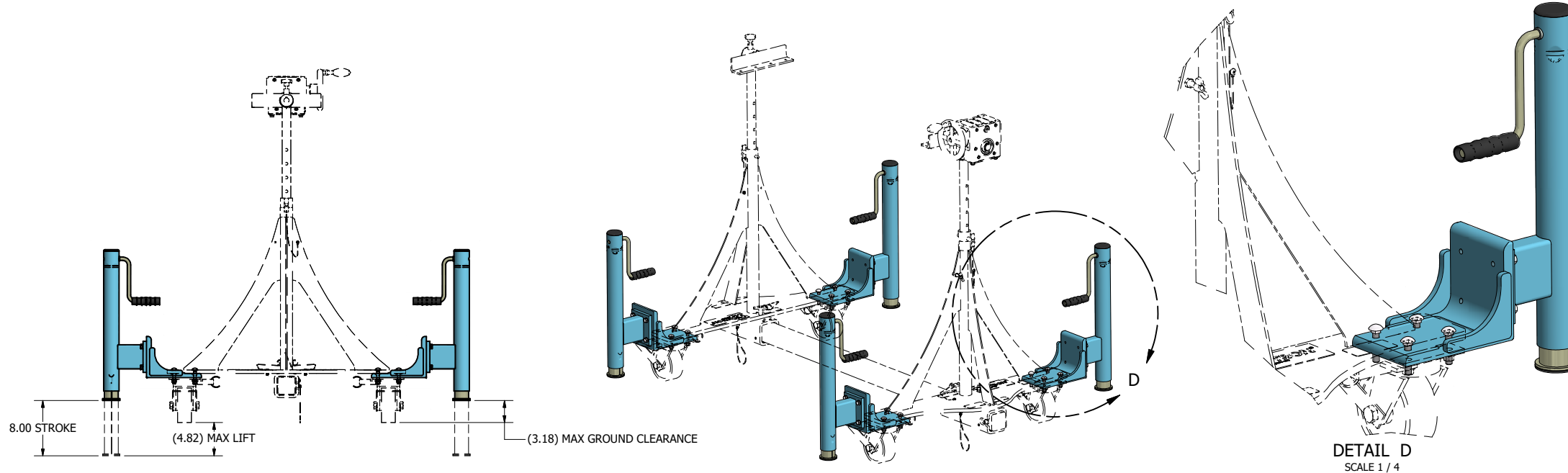
TB1 - ALLOWS ADJUSTMENT OF THE "B" DISTANCE FROM 36"-66" WITH THE BEAM MINIMALLY EXTENDING PAST THE END FRAME.

TB2 - ALLOWS ADJUSTMENT OF THE "B" DISTANCE FROM 66"-104" WITH THE BEAM MINIMALLY EXTENDING PAST THE END FRAME.

TB3 - ALLOWS ADJUSTMENT OF THE "B" DISTANCE FROM 105"-177" WITH THE BEAM MINIMALLY EXTENDING PAST THE END FRAME. END FRAMES CAN ALSO BE ADJUSTED DOWN TO A "B" DISTANCE OF 36" WITH THE BEAM EXTENDING BEYOND THE END FRAME.

"J1, J2, J3, J4" STABILIZING JACKS

SEE CHART FOR HANDLE ORIENTATION CODE

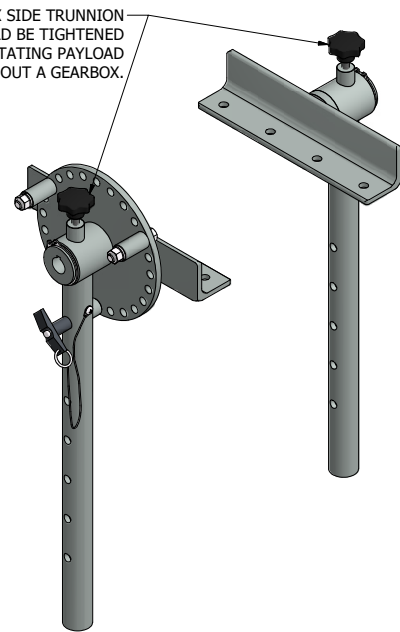


This Drawing is the property of FLOTRON, Inc. and is not to be used, copied or reproduced in any way other than for the particular purpose for which it is provided, and when said purpose has been fulfilled, it should be destroyed or returned to FLOTRON, Inc.

TRUNNION INTERFACE MOUNT OPTIONS

"LGB" LESS GEARBOX

NON-GEARBOX SIDE TRUNNION LOCK KNOBS SHOULD BE TIGHTENED EXCEPT WHEN ROTATING PAYLOAD WHEN USING FIXTURE WITHOUT A GEARBOX.



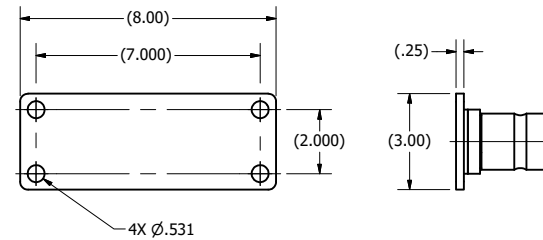
LGB LESS GEAR BOX OPTION

(SHOWN ABOVE WITH THE SB10 INTERFACE AND OPTIONAL INDS15 INDEX PLATE) AVAILABLE WITH ALL INTERFACE OPTIONS. CAN BE ORDERED WITHOUT INDEX PLATE BUT INDEX PLATE IS HIGHLY RECOMMENDED TO PREVENT ACCIDENTAL ROTATION.

PAYLOAD CG MUST BE ON OR VERY CLOSE TO ROTATIONAL CENTERLINE FOR SAFE OPERATION

"P8" INTERFACE

INDEX STOPS (S) CAN PREVENT ROTATION PAST A DESIRED ANGLE IN EITHER DIRECTION.



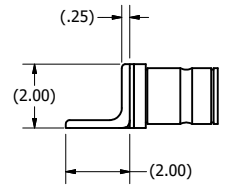
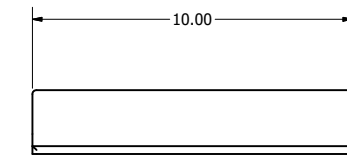
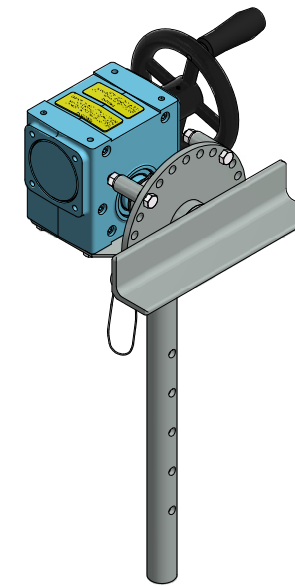
OPTIONAL **IND15** INDEX PLATE LOCKS ROTATION IN 15° INCREMENTS TO PROVIDE REDUNDANT SAFETY. INDEX LOCKING PIN **MUST** BE REMOVED BEFORE ROTATION. TO ADD STOPS SPECIFY **INDS15**

(INDEX LOCKING PIN)

NON-GEARBOX SIDE TRUNNION LOCK KNOBS CAN BE USED TO ORIENT AND LOCK INTERFACE DURING PAYLOAD INTEGRATION. KNOBS MUST BE LOOSENED PRIOR TO ROTATING THE PAYLOAD WITH THE GEARBOX.

P8 PAYLOAD INTERFACE (SHOWN WITH OPTIONAL **INDS15** INDEX PLATE AND INDEX STOPS)

"SA10" ANGLE INTERFACE

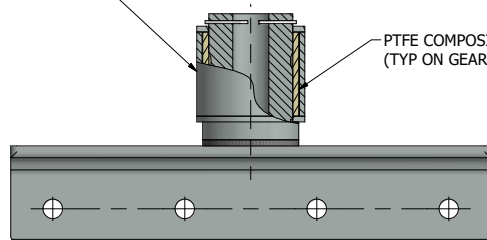


SA10 PAYLOAD INTERFACE (10" STANDARD LENGTH) 2 X 2 X 3/8 ANGLE, NO HOLES OR MACHINED INTERFACE SURFACE (SHOWN WITH OPTIONAL **INDS15** INDEX PLATE AND INDEX STOPS)

"B1" PTFE COMPOSITE TRUNNION BEARING

BEARING HOUSING

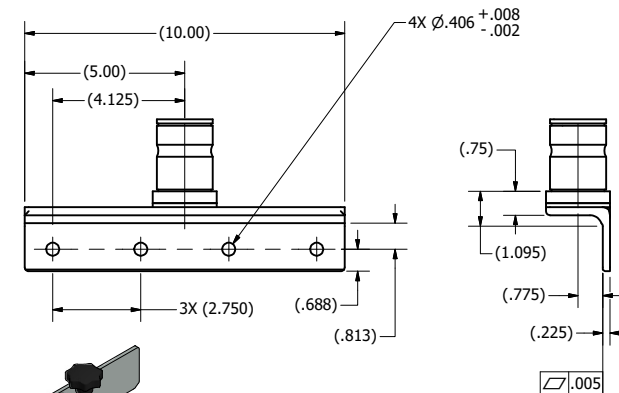
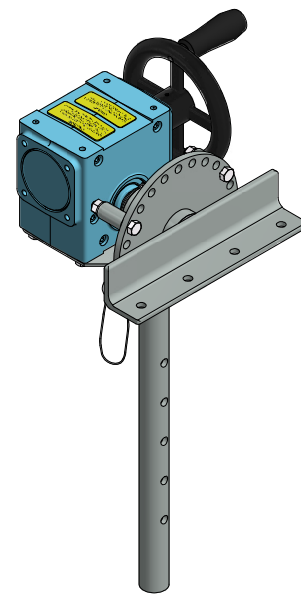
PTFE COMPOSITE BUSHING LINER (TYP ON GEARBOX & NON-GEARBOX SIDE)



TRUNNION INTERFACE MOUNT (**SB10** SHOWN)

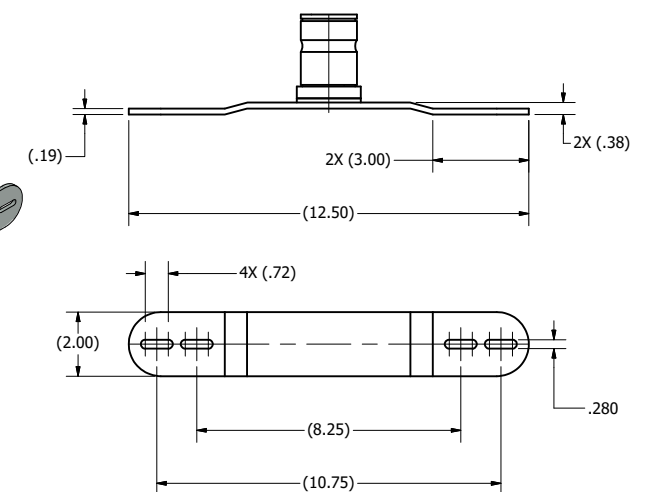
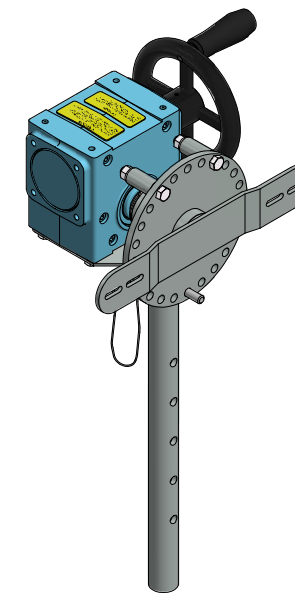
B1 RISER OPTION BEARING HOUSING BUSHINGS AVAILABLE FOR ALL INTERFACE OPTIONS OPTION RECOMMENDED FOR LONG OR FLEXIBLE PAYLOADS TO EXTEND BEARING LIFE

"SB10" ANGLE INTERFACE



SB10 PAYLOAD INTERFACE (10" LONG ANGLE) 2 X 2 X 3/8 ANGLE WITH MACHINED INTERFACE SURFACE AND MOUNTING HOLES (SHOWN WITH OPTIONAL **INDS15** INDEX PLATE AND INDEX STOPS)

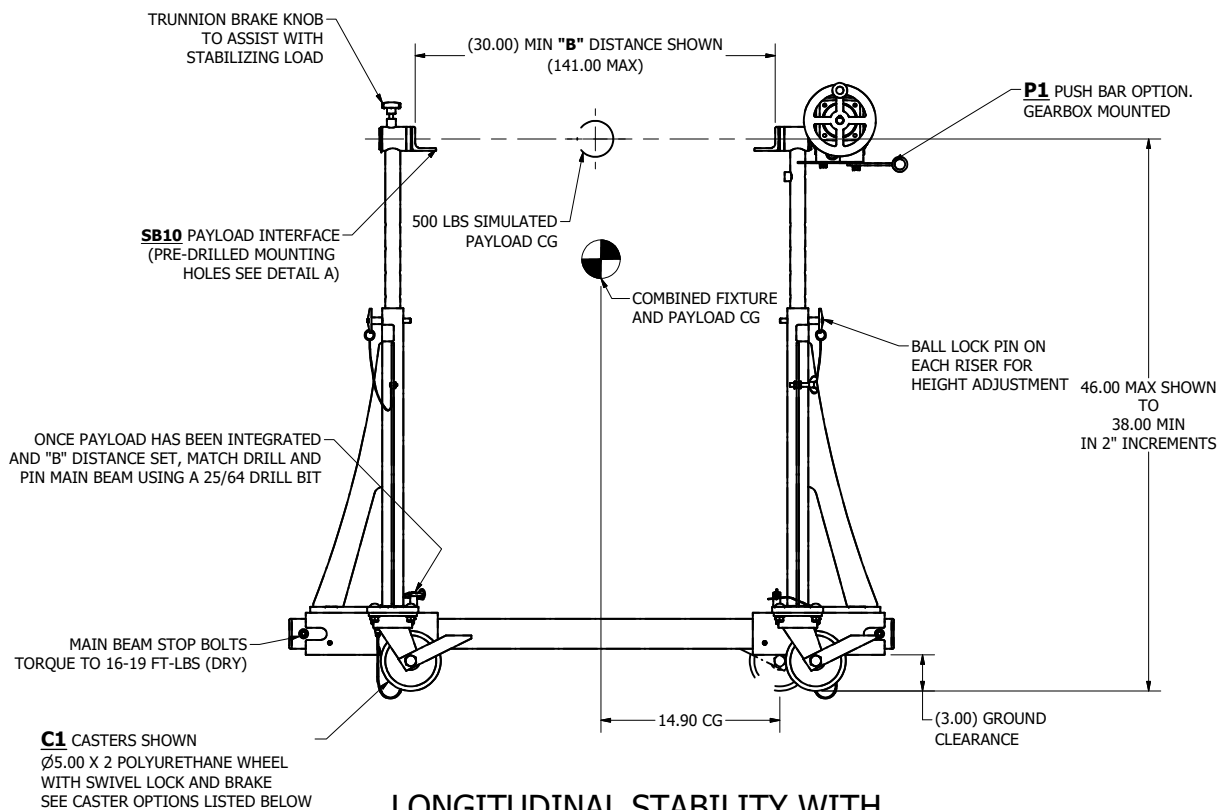
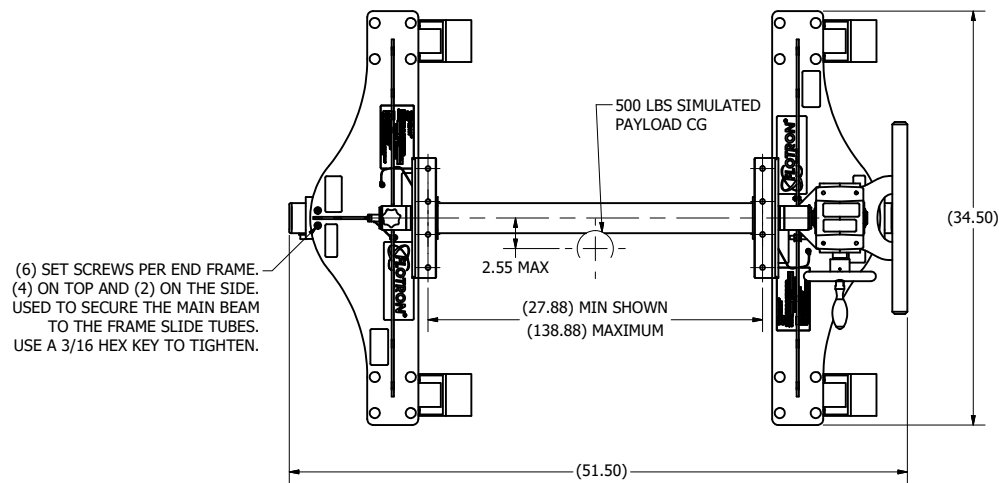
"1018" INTERFACE



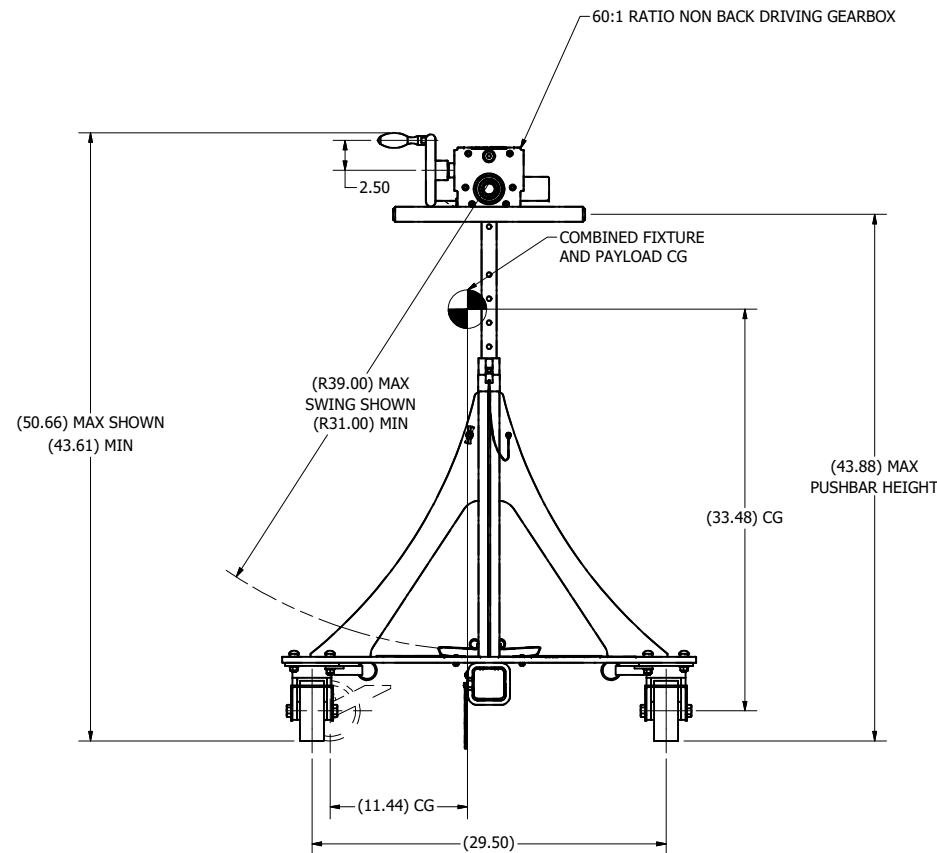
1018 PAYLOAD INTERFACE (SHOWN WITH OPTIONAL **INDS15** INDEX PLATE AND INDEX STOPS)

This Drawing is the property of FLOTRON, Inc. and is not to be used, copied or reproduced in any way other than for the particular purpose for which it is provided, and when said purpose has been fulfilled, it should be destroyed or returned to FLOTRON, Inc.

		2630 PROGRESS STREET VISTA, CALIFORNIA 92081 http://www.flotron.com	
SCALE	SIZE	DRAWING NO.	REV
1 : 8	D	11007-1	-
SHEET			2 OF 4



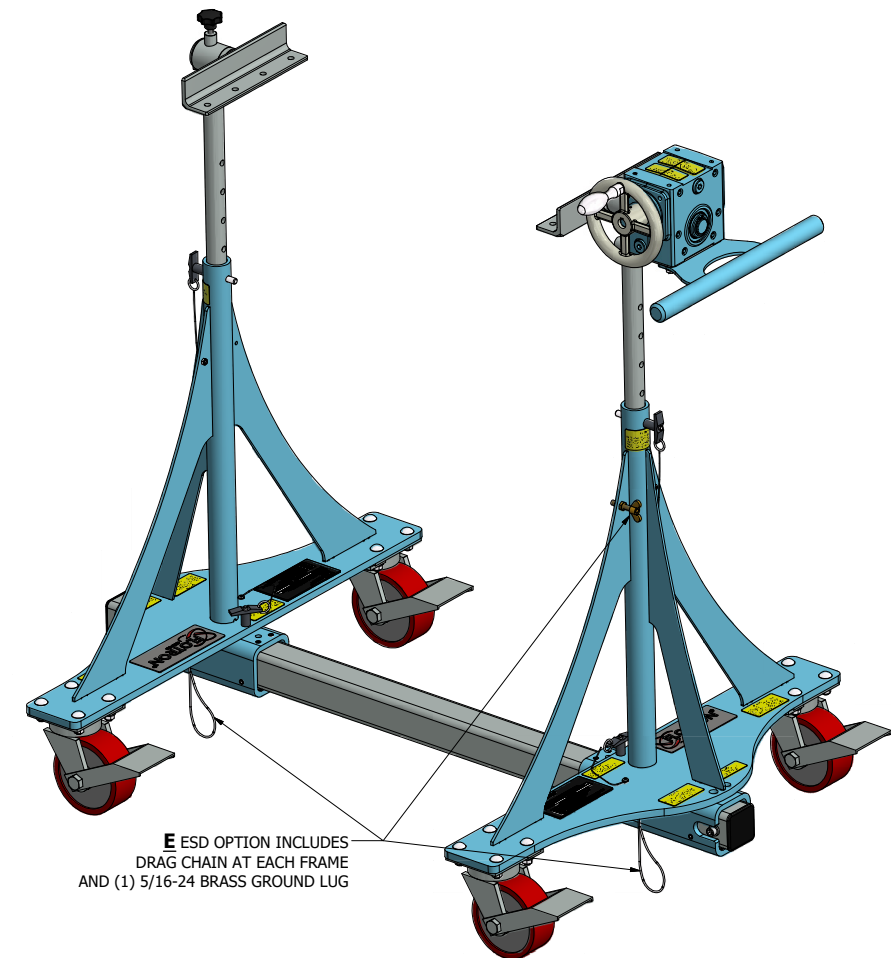
LONGITUDINAL STABILITY WITH 500 LB PAYLOAD: 14.90 / 33.48 = .44G



LATERAL STABILITY WITH 500 LB PAYLOAD: 11.44 / 33.53 = .34G

OPTIONAL CASTERS:

- A. (BLANK) STANDARD SWIVEL CASTERS WITH TECH LOCK BRAKES AND Ø5" X 2" WIDE POLYURETHANE WHEELS. (NOT SHOWN)
- B. (C1) HEAVY DUTY IMPAK SWIVEL CASTERS WITH SWIVEL LOCKS, TREAD LOCK BRAKES AND Ø5" X 2" WIDE POLYURETHANE WHEELS.
- C. (C2) SWIVEL CASTERS WITH CONDUCTIVE WHEELS, TECH-LOCK BRAKES AND Ø5" X 2" WIDE WHEELS. (NOT SHOWN)
- D. (C3) HEAVY DUTY IMPAK SWIVEL CASTERS WITH SWIVEL LOCKS, TREAD LOCK BRAKES AND Ø5" X 2" WIDE ELASTOMER WHEELS TO IMPROVE ROLLABILITY. (NOT SHOWN)
- E. (C4) Ø5" X 2" WIDE SPRING-LOADED CASTERS WITH URETHANE WHEELS WHICH ISOLATES SHOCK AND VIBRATION. INCLUDES SWIVEL LOCKS AND BRAKES. (NOT SHOWN)



- 5. PROOF LOAD TEST OPTIONAL.
- 4. CONFIGURATION SHOWN: SFPE-635-P1-SB10-B30-C1
- 3. FINISH OPTIONS:

- A. "STANDARD" FLOTTRON FINISHES - CLASS 10K (ISO 7 CLEANROOM COMPATIBLE FINISHES) - FLOTTRON BLUE POWDER COATED END FRAMES, GEARBOX PAINTED FLOTTRON BLUE, ZINC PLATED STEEL OR BLACK OXIDE FASTENERS, MISC. HARDWARE, AND COMPONENTS. STANDARD LUBRICANTS.
- B. "N" FINISH - CLASS 10K (ISO 7 CLEANROOM COMPATIBLE FINISHES) - FLOTTRON BLUE POWDER COATED END FRAMES, GEARBOX PAINTED FLOTTRON BLUE, NICKEL PLATED COMPONENTS (NO ZINC), STAINLESS STEEL, OR BLACK OXIDE FASTENERS AND MISC. HARDWARE. STANDARD LUBRICANTS.
- C. "C" FINISH - CLASS 1K (ISO 6 CLEANROOM COMPATIBLE FINISHES) - CLEAN ROOM COMPATIBLE FINISHES, SKY WHITE POWDER COATED END FRAMES, GEARBOX PAINTED GLOSS WHITE EPOXY, NICKEL PLATED COMPONENTS (NO ZINC), STAINLESS STEEL FASTENERS AND MISC. HARDWARE. OPEN-ENDED TUBES NICKEL PLATED. KRYTOX GPL 207 LUBRICANT ON CASTER SWIVEL BEARINGS, TRUNNION SHAFTS, AND JACKS (IF APPLICABLE).

- 2. LOAD RATING: 500 LBS @ 2.55" MAX ECCENTRICITY CONSIDERING A SIMULTANEOUS 1/3G SIDE LOAD (WORST CASE DIRECTION) AND A 1G VERTICAL LOAD. SFy=2 & SFult=3. MAX TORQUE ON GEARBOX 1,275 IN-LBS (700 IN-LBS MAX EASY CRANK) LOAD RATING: 335 LBS @ 2.53" MAX ECCENTRICITY CONSIDERING A SIMULTANEOUS 1/3G SIDE LOAD (WORST CASE DIRECTION) AND A 1G VERTICAL LOAD. SFy=3 & SFult=5. MAX TORQUE ON GEARBOX 850 IN-LBS (700 IN-LBS MAX EASY CRANK)
- 1. WEIGHT IN TITLE BLOCK INCLUDES 500 LB PAYLOAD.

NOTES:

PROPRIETARY

This Drawing is the property of FLOTTRON, Inc. and is not to be used, copied or reproduced in any way other than for the particular purpose for which it is provided, and when said purpose has been fulfilled, it should be destroyed or returned to FLOTTRON, Inc.

TOLERANCES UNLESS OTHERWISE SPECIFIED		FLOTTRON®		2630 PROGRESS STREET VISTA, CALIFORNIA 92081 http://www.flottron.com	
FRACTION	DEC.	ANGLES	P8 INTERFACE ASSY (PLAIN)		
±.03	±.010	±5°			
XX	XXX	XXX			
SCALE 1 : 8		SIZE D			
WT: 712.7 lbmass		Cad software: Inventor		SHEET 1 OF 4	