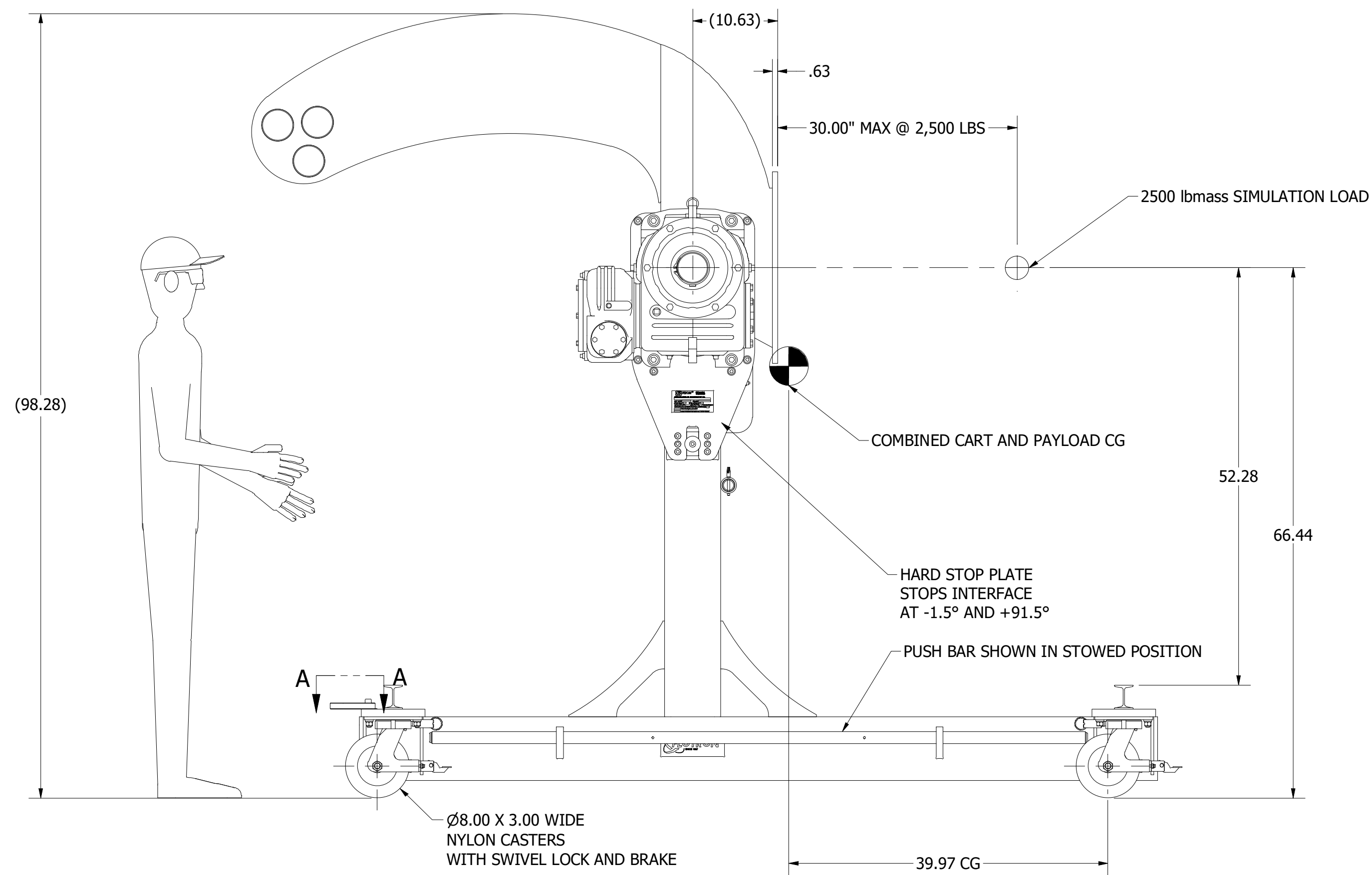
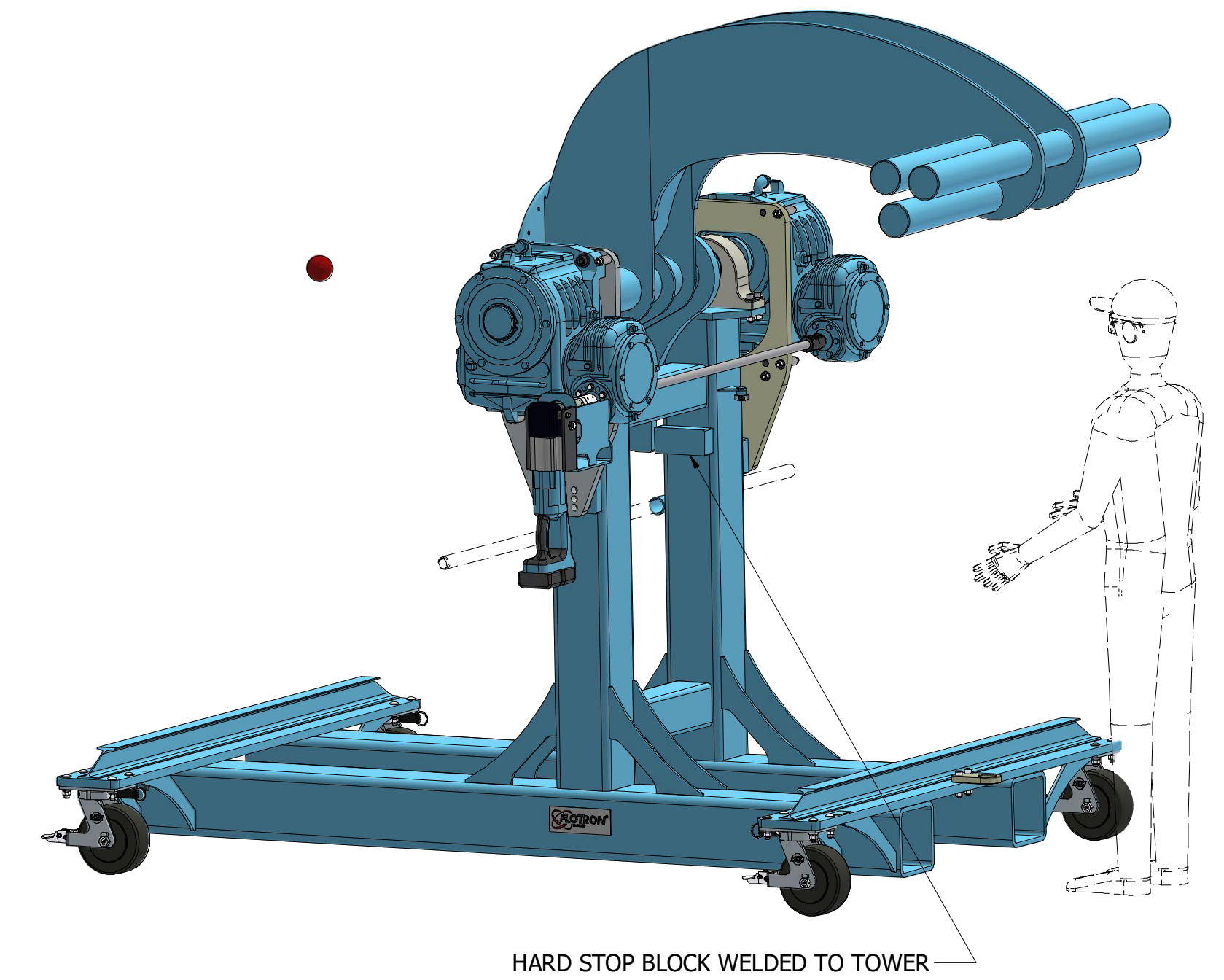
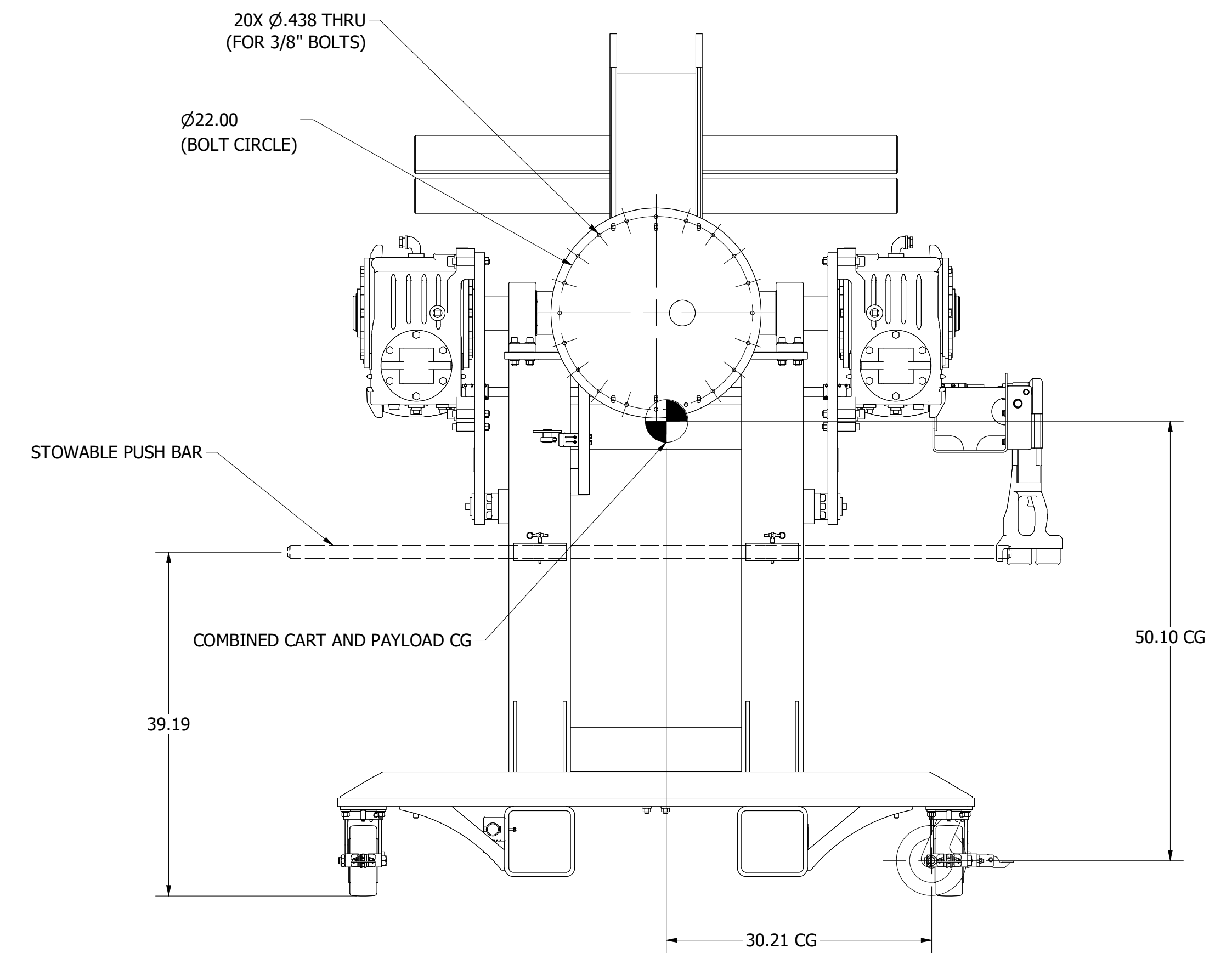


SECTION A-A  
TOW HOOK  
SCALE 1 : 4



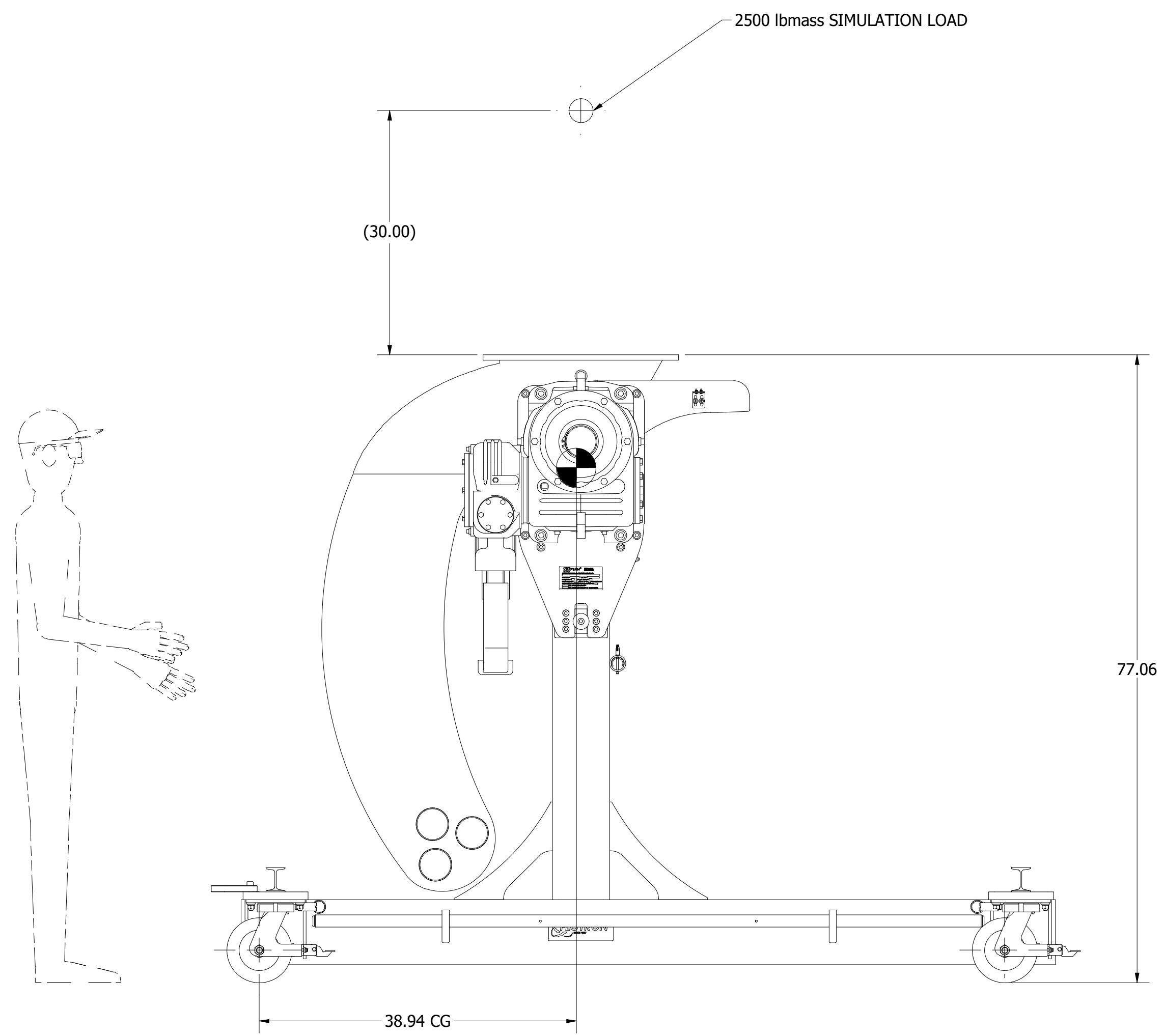
LONGITUDINAL STABILITY:  $39.97 / 50.10 = .79G$



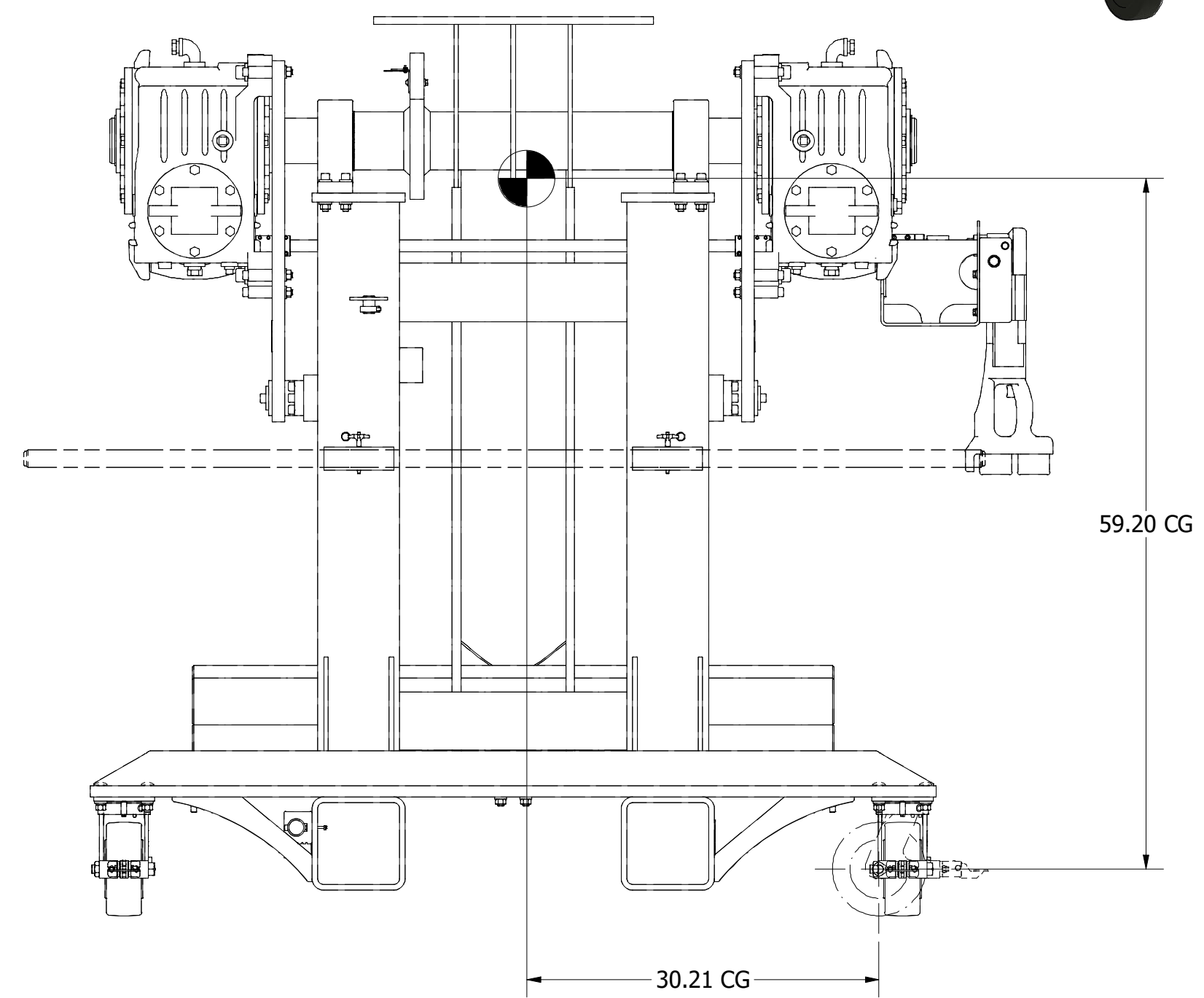
LATERAL STABILITY:  $30.21 / 50.10 = .60G$

- AUDIBLE BELL TO ALERT OPERATOR TO STOP ROTATION AT -0° AND +90° (NOT SHOWN).
  - FINISHES: STANDARD FLOTTRON FINISHES - FLOTTRON BLUE POWDER COATED END FRAMES, GEARBOX PAINTED FLOTTRON BLUE, ZINC PLATED STEEL OR BLACK OXIDE FASTENERS, MISC. HARDWARE, AND COMPONENTS. STANDARD LUBRICANTS.
  - LOAD RATING: 2,500 LBS @ 30" (75,000 IN-LB MOMENT CAPACITY) FROM INTERFACE CONSIDERING A SIMULTANEOUS 1/2G SIDE LOAD (WORST CASE DIRECTION) AND A 1G VERTICAL LOAD.  $SF_y=3$  &  $SF_{ult}=5$ .
  - WEIGHT IN TITLE BLOCK INCLUDES 2,500 LB PAYLOAD.
- NOTES:

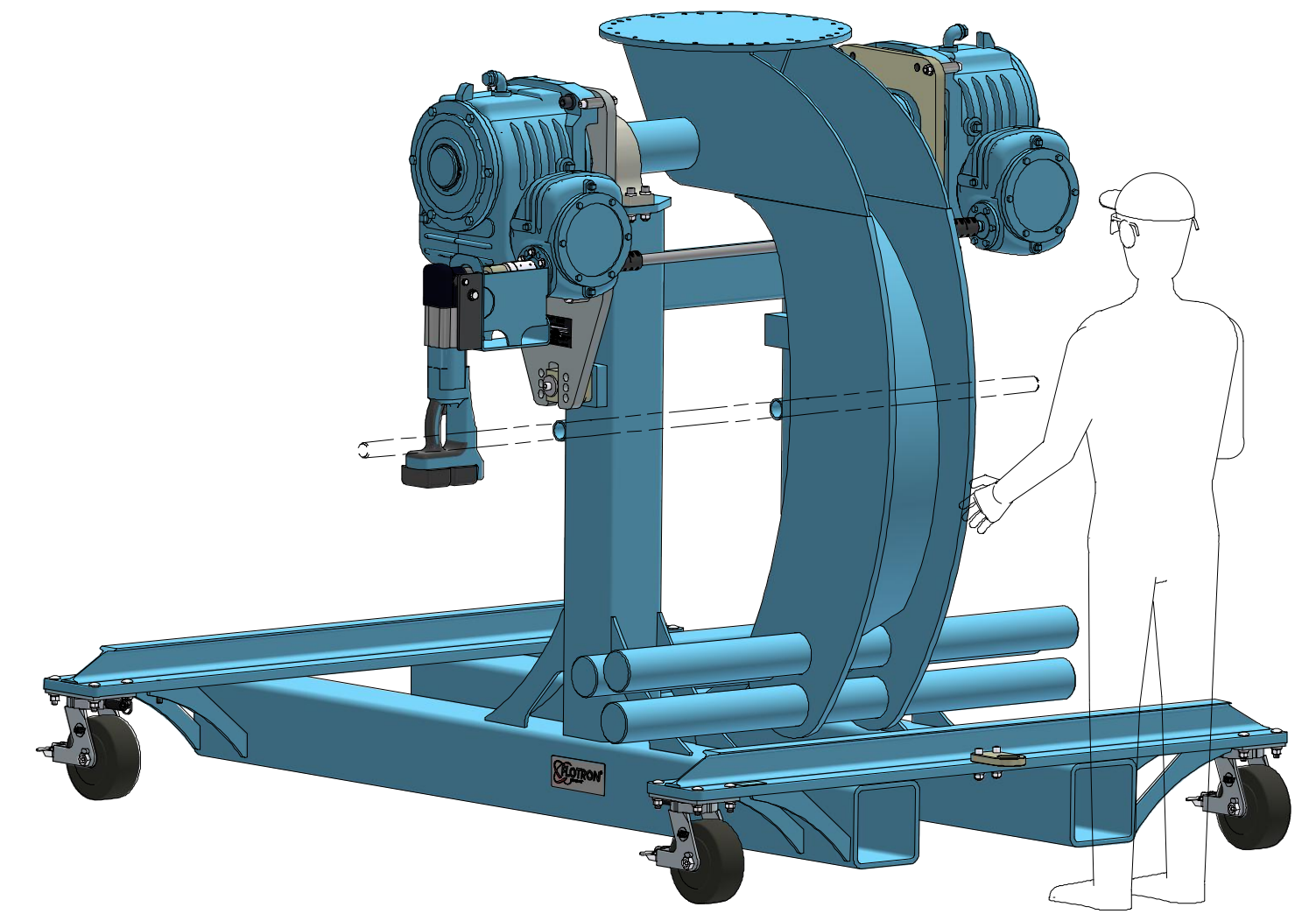
<b>PROPRIETARY</b> This Drawing is the property of FLOTTRON, Inc. and is not to be used, copied or reproduced in any way other than for the particular purpose for which it is provided, and when said purpose has been fulfilled, it should be destroyed or returned to FLOTTRON, Inc.		UNLESS OTHERWISE SPECIFIED DIMENSIONS ARE IN INCHES LINEAR TOLERANCES: ±.03 ANGULAR TOLERANCES: ±.5° XX .000 DO NOT SCALE DRAWING INTERPRET DIMENSIONING AND TOLERANCING PER ASME Y14.5-2018 INTERPRET DWG. PER ASME Y14.100		2630 PROGRESS STREET VISTA, CALIFORNIA 92081 http://www.flotron.com	
<b>MEDIUM SATELLITE UPENDER</b>					
SCALE	SIZE	DRAWING NO.			
1 : 12	D	8131-100PROP			
WT: 6665.2 lbmass		Cad software: Inventor		SHEET 1 OF 2	



LONGITUDINAL STABILITY:  $38.94 / 59.20 = .65G$



LATERAL STABILITY:  $30.21 / 59.20 = .51G$



This Drawing is the property of FLOTRON, Inc. and is not to be used, copied or reproduced in any way other than for the particular purpose for which it is provided, and when said purpose has been fulfilled, it should be destroyed or returned to FLOTRON, Inc.

		2630 PROGRESS STREET VISTA, CALIFORNIA 92081 <a href="http://www.flotron.com">http://www.flotron.com</a>	
		SCALE 1 : 12	SIZE D
		DRAWING NO. 8131-100PROP	REV -
		SHEET 2 OF 2	