

9. SEE SHEET 6 FOR HARDWARE AND LUBRICATION INFORMATION.
8. CONFIGURATION SHOWN ON THIS SHEET: LJ-C-3750-J2
7. SEE SHEET 3 FOR CASTER JACK (C2) AND CASTER MOUNTING PLATE (C1) OPTIONS.
6. IN LIEU OF USING THE PROVIDED HAND CRANK, A HAND DRILL CAN BE USED TO ROTATE THE INPUT CLUTCH/SHAFT. SINCE THIS JACK HAS A CLUTCH, THE USER DOES NOT NEED TO WORRY ABOUT DAMAGING JACK FROM OVER TORQUING.
5. JACK HANDLE ORIENTATION CAN BE ROTATED $\pm 90^\circ$ FROM WHAT IS SHOWN ON THIS VIEW BY REMOVING FASTENERS FROM TOP CAP AND ROTATING 90° . "J2" HANDLE ORIENTATION SHOWN.
4. 20 TURNS OF HANDLE PER INCH LIFT OF JACK.
3. FINISHES: CLASS 1K (ISO 6)/CLEAN ROOM COMPATIBLE AND NO ZINC.
2. LUBRICANTS:
(BLANK) - LUBRICATE SCREW AND GEARS, WITH SYNCO SUPER LUBE GREASE (MMC #1353K1).
(L1) - LUBRICATE SCREW, GEARS, CASTER SWIVEL BEARING & AXLE WITH KRYTOX LVP
(L2) - LUBRICATE SCREW, GEARS, CASTER SWIVEL BEARING & AXLE WITH BRAYCOTE 631RP
1. LEVELING JACK CAPACITY: SIMULTANEOUS 3,750 LBS [1,701 KG] VERTICAL LOAD & 1,875 LB [850 KG] SIDE LOAD WITH SFy=3 & SFu=5.

NOTES:

PROPRIETARY

This Drawing is the property of FLOTRON, Inc. and is not to be used, copied or reproduced in any way other than for the particular purpose for which it is provided, and when said purpose has been fulfilled, it should be destroyed or returned to FLOTRON, Inc.

UNLESS OTHERWISE SPECIFIED
DIMENSIONS ARE IN INCHES

LINEAR TOLERANCES:	ANGULAR TOLERANCES:
$\pm .03$	$\pm .010$
$\pm .005$	$\pm .5^\circ$
$\pm .002$	$\pm .25^\circ$

DO NOT SCALE DRAWING
INTERPRET DIMENSIONING AND TOLERANCING PER ASME Y14.5-2018
INTERPRET DWG. PER ASME Y14.100



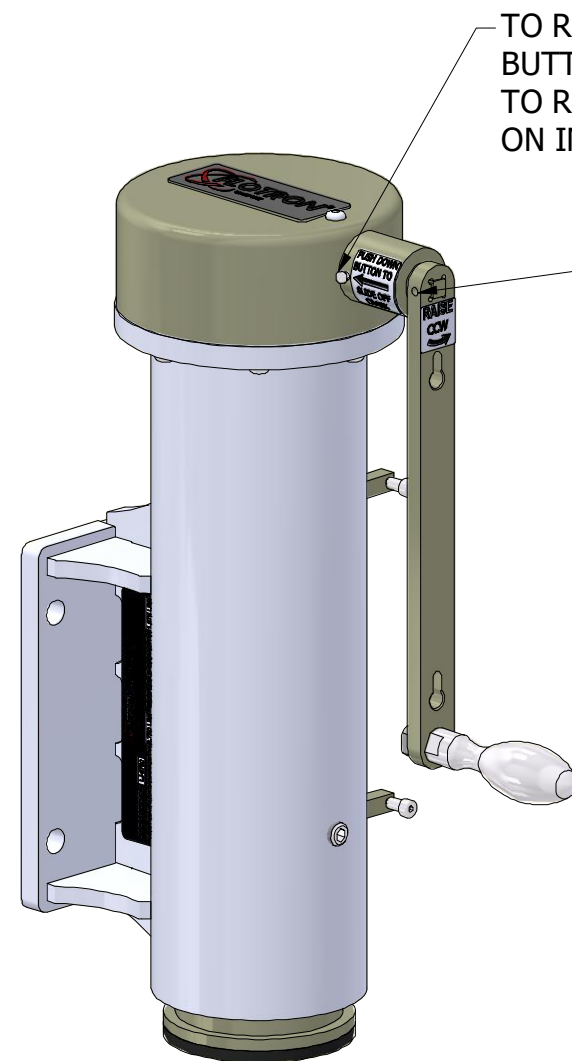
2630 PROGRESS STREET
VISTA, CALIFORNIA 92081
<http://www.flotron.com>

JACK, LEVELING & CASTER, CJ-2500 & LJ-3750

SCALE	SIZE	DRAWING NO.	
1 : 4	B	8026-000PROP	
WT: 54.8 lbmass		Cad software: Inventor	SHEET 1 OF 6

HAND CRANK STOWAGE

IT IS RECOMMENDED WHEN NOT RAISING OR LOWERING JACK TO STOW CRANK ASSEMBLY
SO HANDLE & CLUTCH DOES NOT ACCIDENTALLY GET ROTATED OR DAMAGED.
THIS IS ESPECIALLY IMPORTANT DURING TRANSPORTATION OF FIXTURE OF ANY KIND.

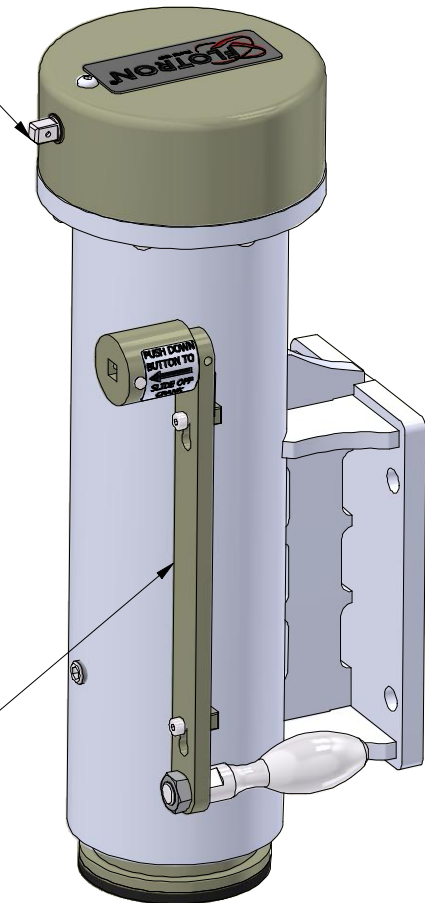


TO REMOVE CRANK AND CLUTCH, PUSH AND HOLD DOWN
BUTTON AND SLIDE OFF CRANK FROM INPUT SHAFT.
TO RE-INSTALL, MANUALLY PUSH DOWN SPRING PIN
ON INPUT SHAFT WITH FINGER AND SLIDE ON CLUTCH.

IF OPERATOR WANTS TO USE A HAND DRILL TO RAISE OR LOWER JACK,
HANDLE CAN BE REMOVED AND STOWED WITH CLUTCH STILL INSTALLED.
TO REMOVE HANDLE FROM CLUTCH. USE A SMALL DIAMETER PIN
(APPROX. Ø1/8") TO PUSH IN SPRING PIN ON CLUTCH SHAFT. HANDLE
CAN THEN BE SLID OFF AND STOWED.

6
STANDARD 3/8"
SQUARE SOCKET
DRIVE

CRANK ASSEMBLY SHOWN
IN STOWED POSITION



This Drawing is the property of FLOTRON, Inc. and is not to be used, copied or reproduced in any way other than for the particular purpose for which it is provided, and when said purpose has been fulfilled, it should be destroyed or returned to FLOTRON, Inc.



2630 PROGRESS STREET
VISTA, CALIFORNIA 92081
<http://www.flotron.com>

SCALE

VARIES

SIZE

B

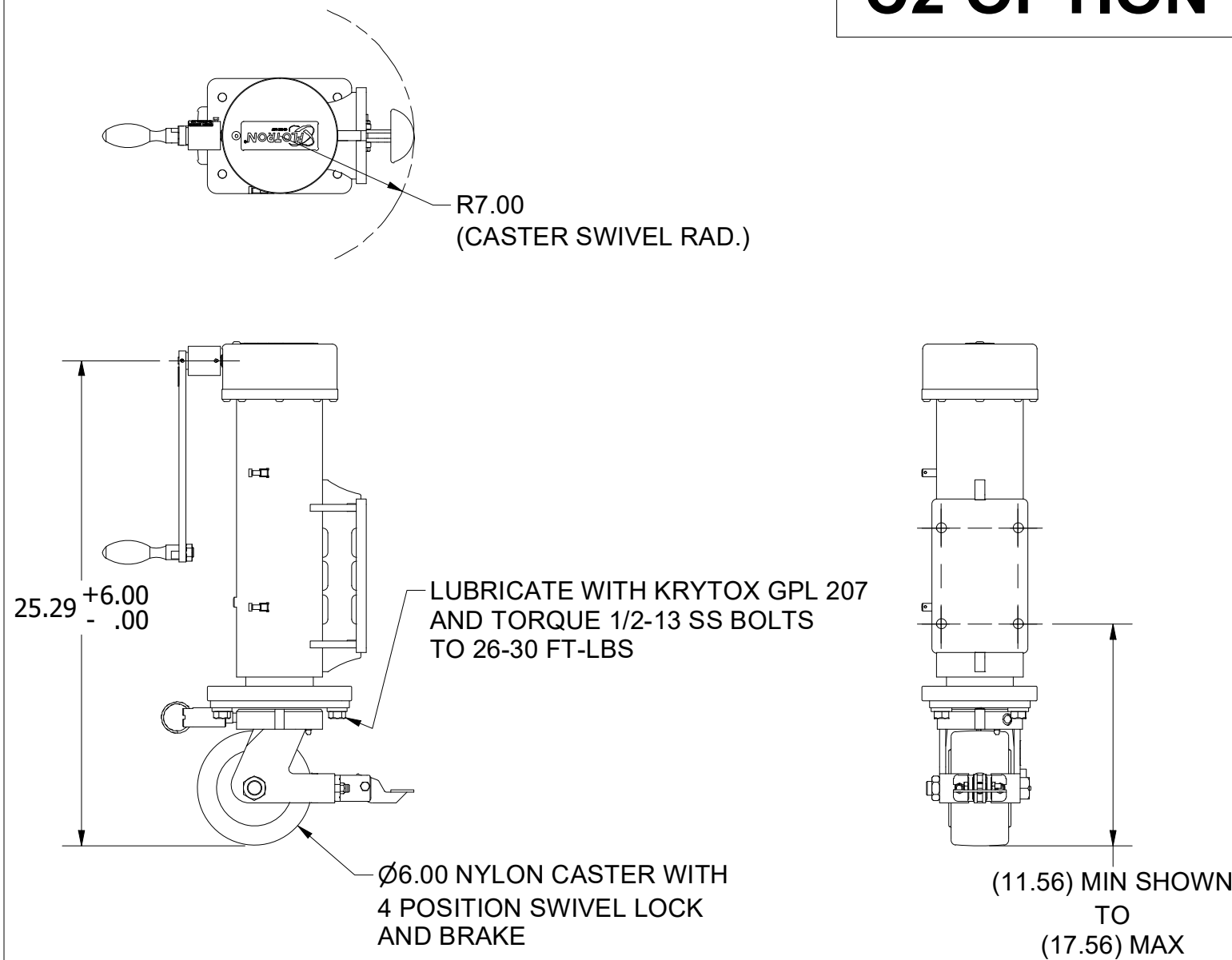
DRAWING NO.

8026-000PROP

SHEET 2 OF 6

CJ-2500 CASTER JACK OPTIONS

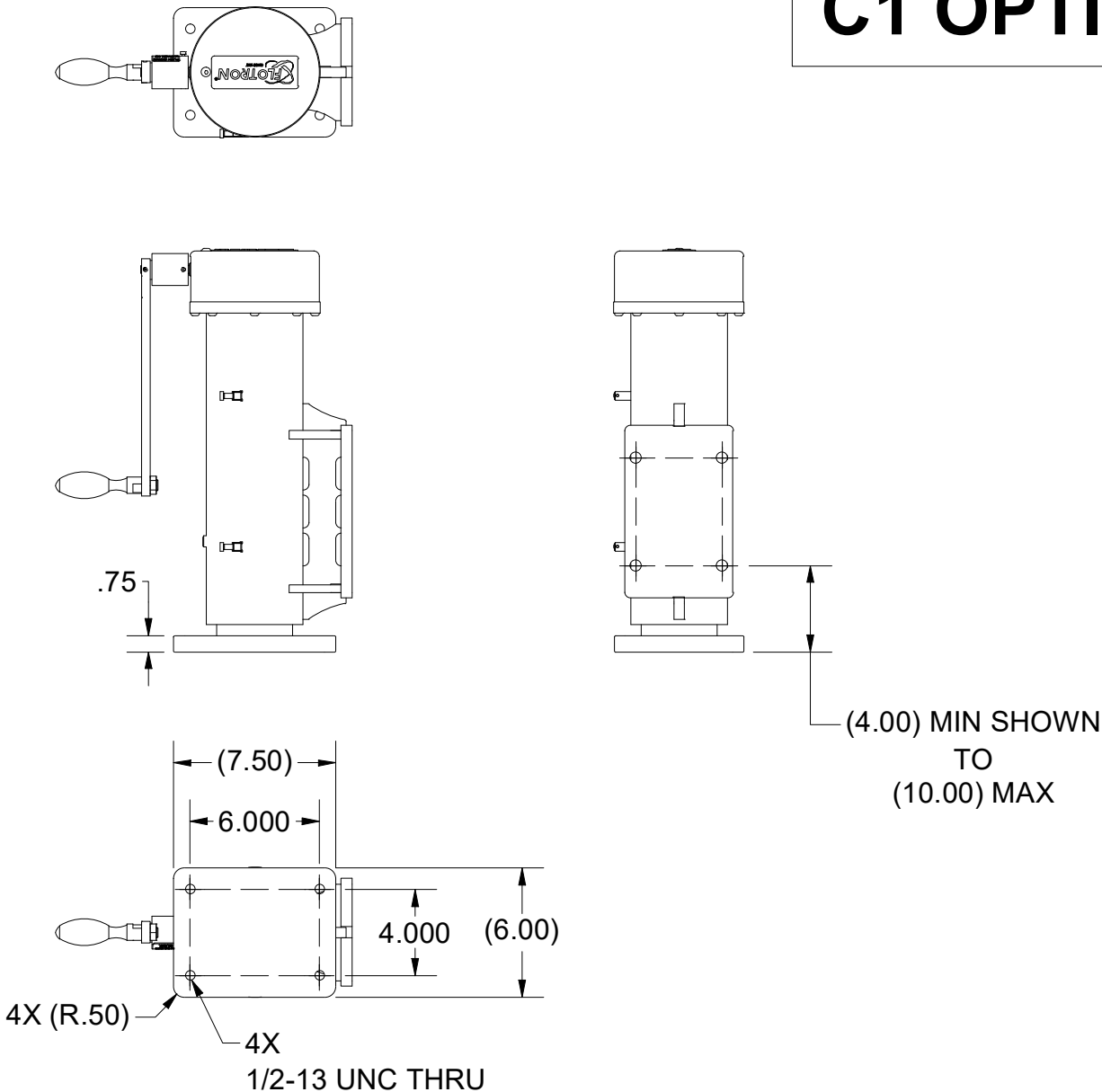
C2 OPTION



4. CJ-2500-C2 CAPACITY: SIMULTANEOUS 2,500 LBS [1,134KG] VERTICAL LOAD & 1,250 LB [567 KG] SIDE LOAD ON CASTER WHEEL WITH SFy=3 & SFu=5.
3. LUBRICATION:
(BLANK) - SCREW AND GEARS LUBRICATED WITH SYNCO SUPER LUBE GREASE (MMC #1353K1).
CASTER SWIVEL BEARING & AXLE LUBRICATED WITH GENERAL PURPOSE BEARING GREASE.
(L1) - SCREW, GEARS, CASTER SWIVEL BEARING & AXLE LUBRICATED WITH KRYTOX LVP
(L2) - SCREW, GEARS, CASTER SWIVEL BEARING & AXLE LUBRICATED WITH BRAYCOTE 631RP
2. WEIGHT OF CONFIGURATION SHOWN IN THIS SECTION: 80 LBS
1. CONFIGURATION SHOWN IN THIS SECTION: CJ-2500-C2-J2 (FOR STANDARD FINISH)
CJ-2500-C-C2-J2 (FOR "C" FINISH)

NOTES:

C1 OPTION



3. CJ-2500-C1 CAPACITY: SIMULTANEOUS 2,500 LBS [1,134KG] VERTICAL LOAD & 1,250 LB [567 KG] SIDE LOAD ON CASTER WHEEL WITH SFy=3 & SFu=5.
2. WEIGHT OF CONFIGURATION SHOWN IN THIS SECTION: 65 LBS
1. CONFIGURATION SHOWN IN THIS SECTION: CJ-2500-C1-J2 (FOR STANDARD FINISH)
CJ-2500-C-C1-J2 (FOR "C" FINISH)

NOTES:

This Drawing is the property of FLOTRON, Inc. and is not to be used, copied or reproduced in any way other than for the particular purpose for which it is provided, and when said purpose has been fulfilled, it should be destroyed or returned to FLOTRON, Inc.



2630 PROGRESS STREET
VISTA, CALIFORNIA 92081
<http://www.flotron.com>

SCALE

VARIES

SIZE

B

DRAWING NO.

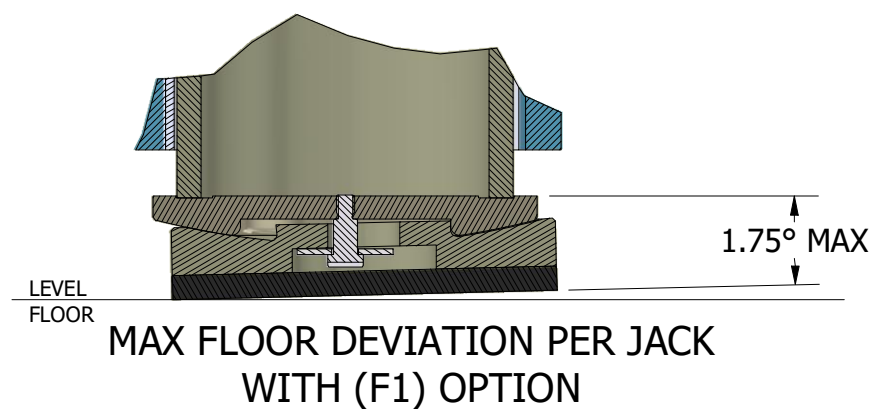
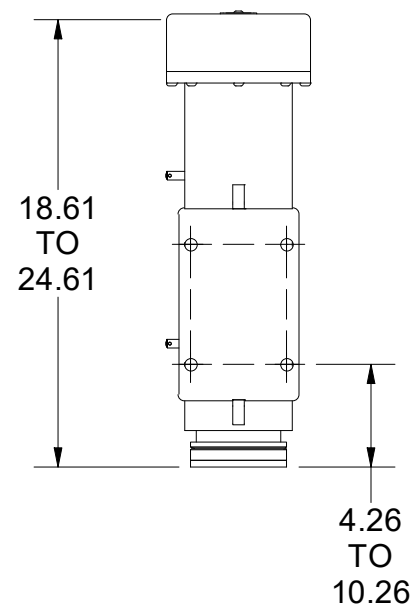
8026-000PROP

SHEET 3 OF 6

F1 OPTION

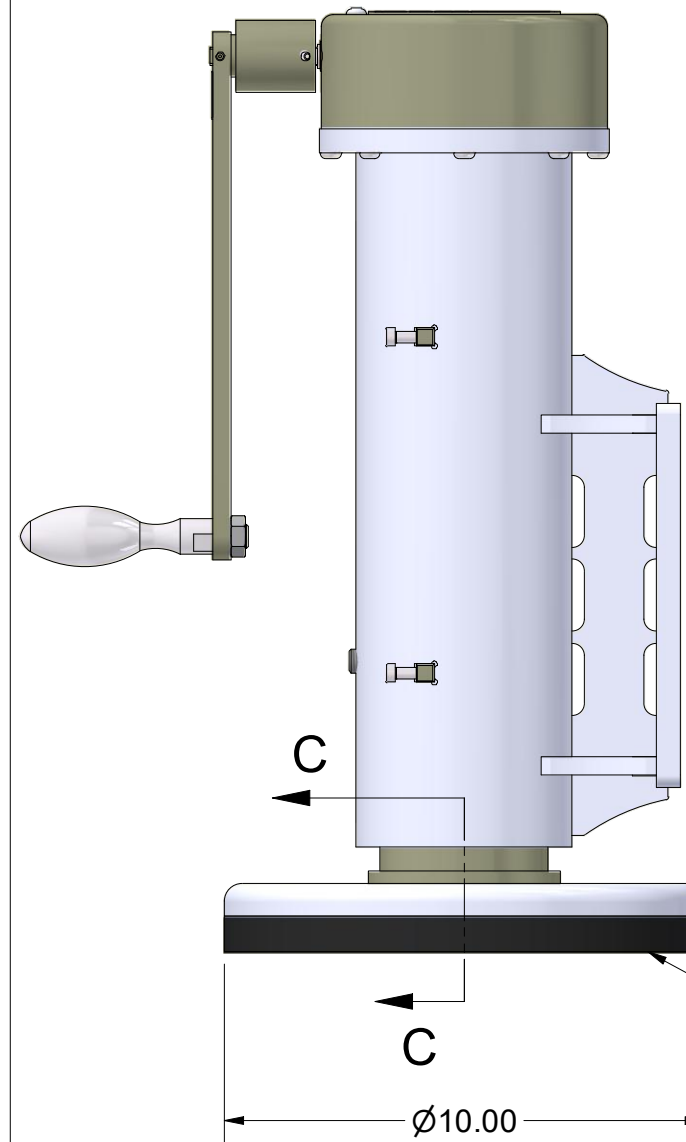
LEVELING FOOT ON BOTTOM OF JACK RAM FOR SEVERELY UNEVEN FLOORS.
LEVELING FOOT ACCOMMODATES 1.75° FLOOR DEVIATION PER JACK.
WHEN INDEXING JACK DOWN TO FLOOR, MAKE SURE BOTTOM OF JACK PAD IS
PARALLEL TO FLOOR. ADJUST ANGLE OF PAD WITH HAND AS NECESSARY
TO MAKE PARALLEL.

LJ-3750-F1-J2

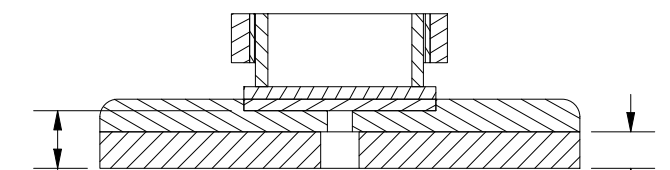
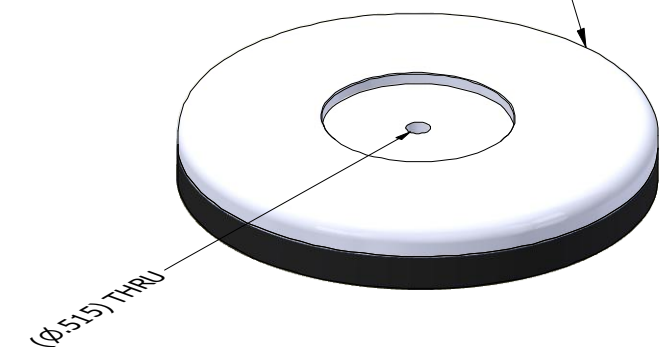


V OPTION

SORBOTHANE (VISCO-ELASTIC POLYMER) PAD INCLUDED TO PROTECT SENSITIVE ELECTRONIC FROM FLOOR VIBRATIONS AND TO SPREAD LOAD OVER LARGER AREA TO REDUCE FLOOR LOADING.
PAD CAN ABSORB 50-98% OF FLOOR VIBRATIONS AT FREQUENCIES FROM 70 TO 30,000 HERTZ.
PAD WILL NOT ISOLATE FREQUENCIES LOWER THAN 50 HZ AND WILL HAVE A NEGATIVE IMPACT AT VERY LOW FREQUENCIES DUE TO NATURAL FREQUENCY OF PAD AROUND 30HZ.
SORBOTHANE WILL COMPRESS APPROXIMATELY .09" UNDER A 3,750 LB MAX LOAD
(NOT INCLUDING COMPRESSION AND VIBRATION ABSORPTION OF STANDARD PAD ATTACHED TO JACK).
FOR INFORMATION OF FREQUENCY ABSORPTION AT A SPECIFIC WEIGHT AND FREQUENCY SEE LINK BELOW. SELECT ASSUMED DEFLECTION THAT MOST CLOSELY MATCHES ACTUAL DEFLECTION:
<https://www.sorbothane.com/technical-data/design-guide-calculators/vibration-calculator/3500>



PAD IS NOT ATTACHED TO JACK
AND NEEDS TO BE STORED
SEPARATELY WHEN NOT IN USE



1.19 HEIGHT ADDED BY OPTION
(NOT INCLUDING COMPRESSION OF PAD)

SECTION C-C
(SOBOTHANE
PAD THICKNESS)

30 DUROMETER PAD COATED IN POLYURETHANE FOR DURABILITY AND CLEANABILITY. PAD CAN ACCOMODATE .50° MAX FLOOR DEVIATION PER JACK (INCLUDING DEVIATION ALLOWANCE OF STANDARD PAD ATTACHED TO JACK) AT MAX RATED LOAD & .40° AT 75% OF MAX RATED LOAD. IF REQ'D, CLEAN RUBBER PAD WITH A 50% MIXTURE OF WHITE VINEGAR AND WATER (DO NOT CLEAN WITH ISOPROPYL ALCOHOL).

This Drawing is the property of FLOTRON, Inc. and is not to be used, copied or reproduced in any way other than for the particular purpose for which it is provided, and when said purpose has been fulfilled, it should be destroyed or returned to FLOTRON, Inc.



2630 PROGRESS STREET
VISTA, CALIFORNIA 92081
<http://www.flotron.com>

SCALE	VARIES	SIZE	B	DRAWING NO.	8026-000PROP
SHEET					4 OF 6

Model - Capacity:

- LJ-3750 - Leveling Jack - 3,750 lb (1,701 kg) capacity
- LJ-4500 - Leveling Jack - 4,500 lb (2,041 kg) capacity
- LJ-8500 - Leveling Jack - 8,500 lb (3,855 kg) capacity
- CJ-2500 - Caster Jack – 2,500 lb (1,134 kg) capacity
- CJ-3250 - Caster Jack – 3,250 lb (1,474 kg) capacity
- CJ-6000 - Caster Jack – 6,000 lb (2,721 kg) capacity

Finishes:

- (blank) - Standard finishes – Exposed jack components nickel plated. Stainless steel fasteners.
- C - - - - Clean room finishes - Same as standard finish with Krytox LVP lubricate

Lubricants:

- (blank) - Standard lubricant – Jack screw lubricated with Synco Super Lube grease. General purpose bearing grease in casters (if applicable) and thrust bearing. See proposal drawing for gear lubricants (varies by model).
- L1 - - - - Jack screw, thrust bearing, and caster lubricated with Krytox LVP (included with C option)
- L2 - - - - Jack screw, thrust bearing, and caster lubricated with Braycote 631RP

Casters:

- (blank) – No casters for leveling jack (LJ models)
- C1 - - - - Standard mounting plate on bottom of jack for caster (No caster provided - see dwg. for dim's)
- C2 - - - - Standard nylon caster with brake and swivel lock. See relevant jack drawing for more dimensional detail and information.

Leveling Foot:

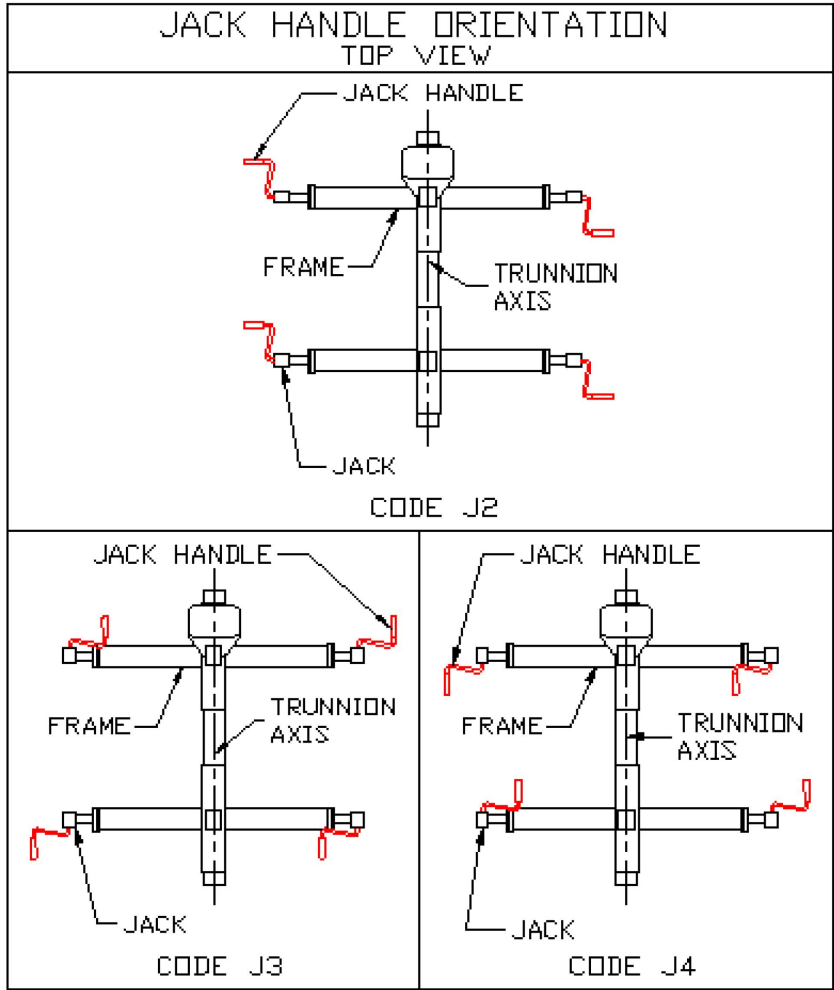
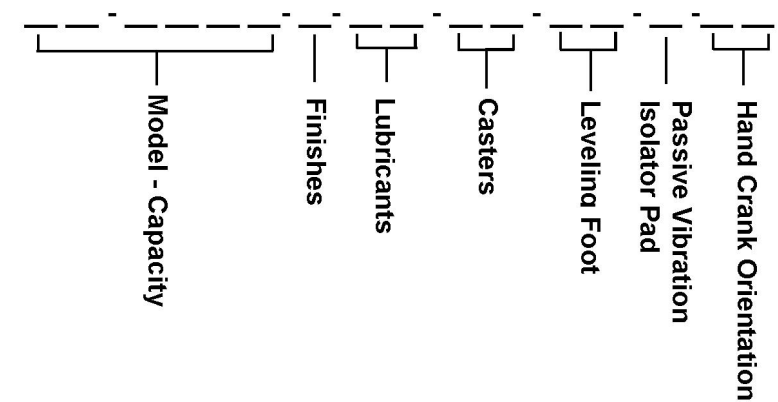
- (blank) – No leveling foot – Thin rubber pad on bottom of jack ram only.
- F - - - - - Leveling foot on bottom of jack ram for severely uneven floors. Leveling foot accommodates 1.75° floor deviation per jack. Optional for LJ-3750 & LJ-4500 models only (comes standard with LJ-8500).

Passive Vibration Isolator Pad:

- (blank) – No Vibration Isolator
- V - - - - - Passive vibration isolator pad included to absorb 50%-98% of floor vibrations at frequencies from 70 to 30,000 hertz (depending on load and frequency). Pad is placed under jack. See proposal drawing for more information. Optional for LJ models only.

Hand Crank Orientation:

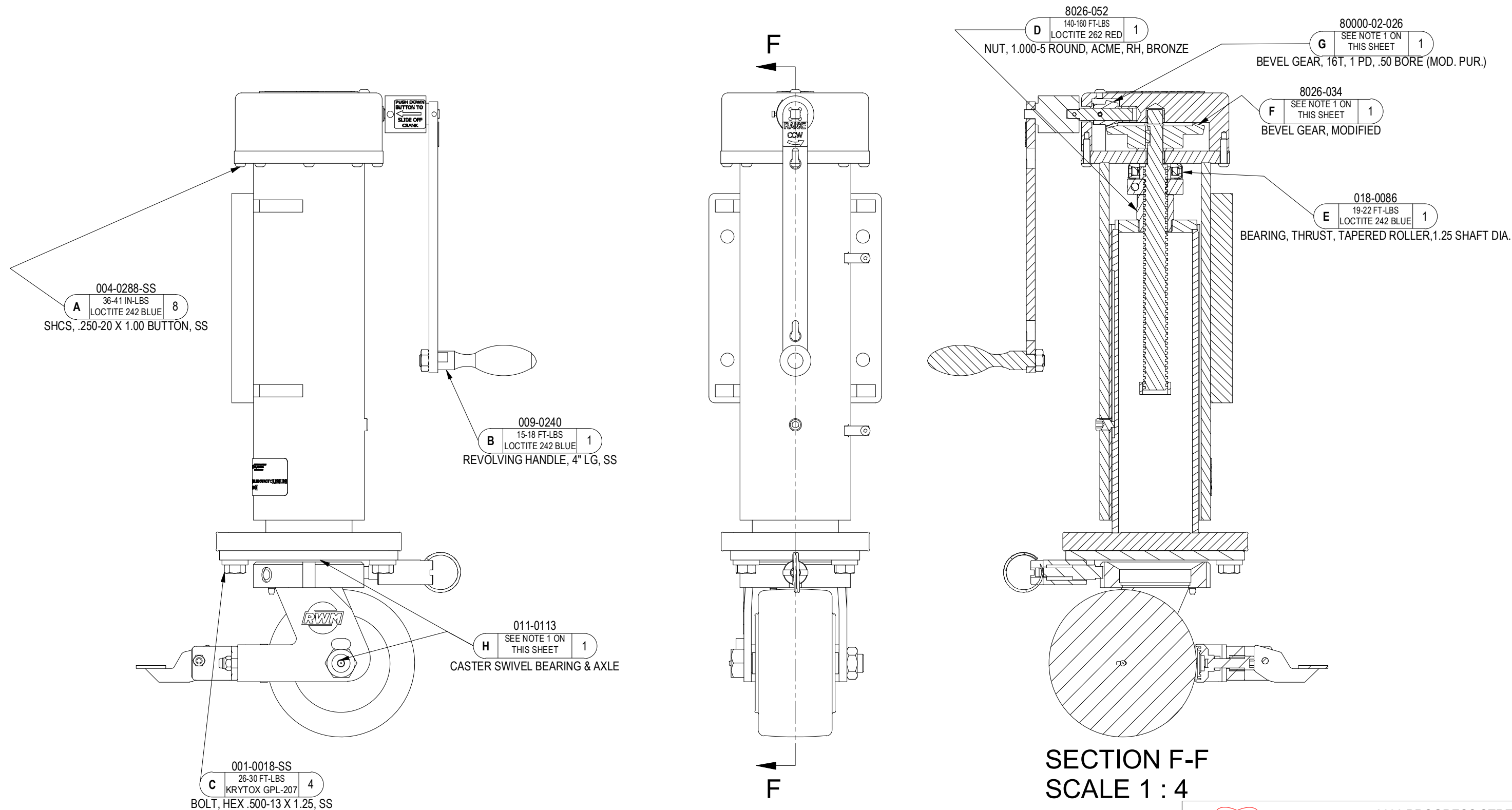
- J2 - - - - See jack handle orientation image.
- J3 - - - - See jack handle orientation image.
- J4 - - - - See jack handle orientation image. (Note: orientation can be changed on-site by technician. See options section for more information.)



This Drawing is the property of FLOTRON, Inc. and is not to be used, copied or reproduced in any way other than for the particular purpose for which it is provided, and when said purpose has been fulfilled, it should be destroyed or returned to FLOTRON, Inc.

		2630 PROGRESS STREET VISTA, CALIFORNIA 92081 http://www.flotron.com	
SCALE	VARIES	SIZE	DRAWING NO.
		B	8026-000PROP
			SHEET 5 OF 6

BOLT TORQUE AND LUBRICATION INFORMATION



1. LUBRICATION:
(BLANK) - LUBRICATE SCREW AND GEARS, WITH SYNCO SUPER LUBE GREASE (MMC #1353K1).
LUBRICATE CASTER SWIVEL BEARING & AXLE WITH GENERAL PURPOSE BEARING GREASE.
(L1) - LUBRICATE SCREW, GEARS, CASTER SWIVEL BEARING & AXLE WITH KRYTOX LVP
(L2) - LUBRICATE SCREW, GEARS, CASTER SWIVEL BEARING & AXLE WITH BRAYCOTE 631RP

NOTES

This Drawing is the property of FLOTRON, Inc. and is not to be used, copied or reproduced in any way other than for the particular purpose for which it is provided, and when said purpose has been fulfilled, it should be destroyed or returned to FLOTRON, Inc.



2630 PROGRESS STREET
VISTA, CALIFORNIA 92081
<http://www.flotron.com>

SCALE	SIZE	DRAWING NO.	SHEET
VARIES	B	8026-000PROP	6 OF 6